



height 176
hair redbrown
eyes bluegrey

dress 34/36
bra a75
shoes 39



riekesproten

tune models

+ 49 171 990 94 32

mail@tune-models.com

tune-models.com

#tunefamily



ISSUE



riekesproten



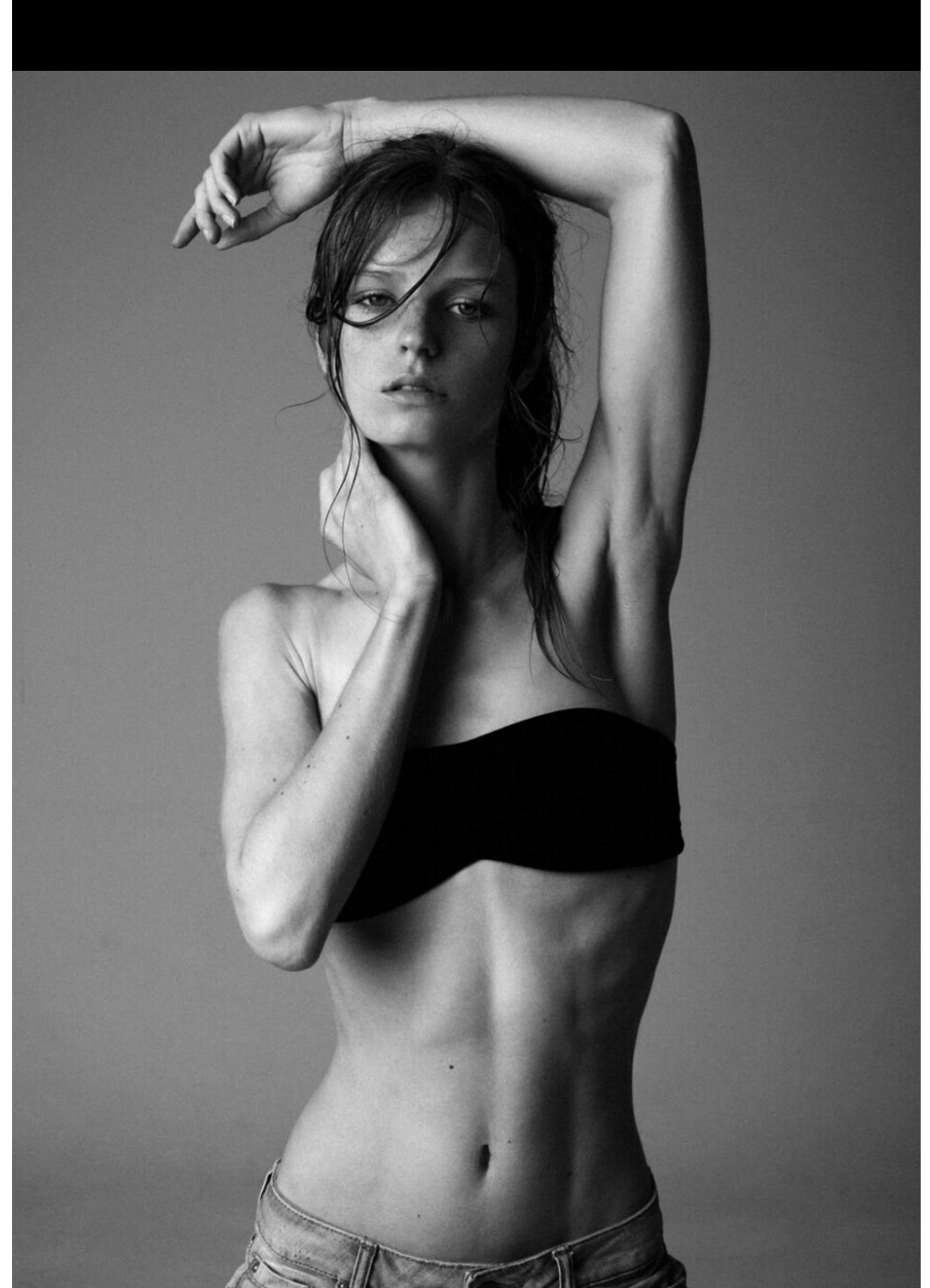
tune models

mail@tune-models.com

tune-models.com

+ 49 171 990 94 32

#tunefamily



rieke sproten

tune models

mail@tune-models.com

tune-models.com

+ 49 171 990 94 32

#tunefamily



riekesproten



tune models

mail@tune-models.com

+ 49 171 990 94 32

tune-models.com

#tunefamily



rieke sproten



tune models

mail@tune-models.com

+ 49 171 990 94 32

tune-models.com

#tunefamily



Paula Cohen D' Anvers,
camisa, \$97.000
Candies, pantalón, \$85.000
Candies, pañuelo, \$38.000

rieke sproten

PAULA

Crónica de
su unión civil
El triunfo de
Pablo Simonetti

Síndrome de
Prader-Willi
**NIÑOS
VORACES**

Max Colodro
"Las mujeres
son una utopía
inalcanzable"

**EN EL UNIVERSO DE
LOS ARQUITECTOS**
Pezo y Von Ellrichshausen

**HECHO
A MANO**
Nueva sección
de tejidos y
manualidades



Moda
**HEAVY
METAL**

tune models

mail@tune-models.com

tune-models.com

+ 49 171 990 94 32

#tunefamily



rieke sproten

tune models

mail@tune-models.com

tune-models.com

+ 49 171 990 94 32

#tunefamily



riekesproten



tune models

mail@tune-models.com

tune-models.com

+ 49 171 990 94 32

#tunefamily



riekesproten



tune models

mail@tune-models.com

+ 49 171 990 94 32

tune-models.com

#tunefamily



rieke sproten



River Island en Ripley, tunica, \$37.990
River Island en Ripley, pantalón, \$34.990
HAM, sombrero, \$24.990

tune models

mail@tune-models.com

tune-models.com

+ 49 171 990 94 32

#tunefamily



riekesproten



tune models

mail@tune-models.com

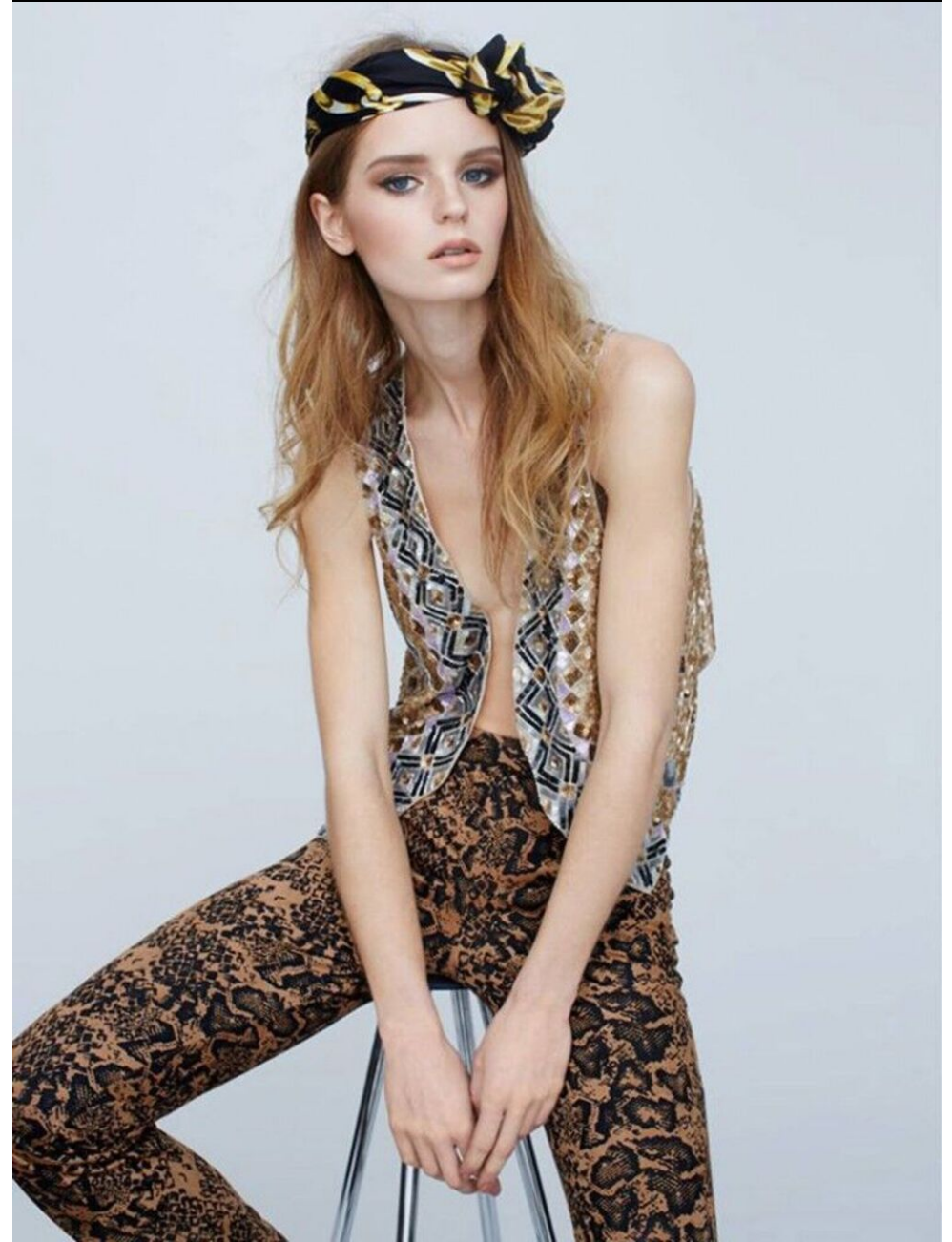
tune-models.com

+ 49 171 990 94 32

#tunefamily



riekesproten



tune models

mail@tune-models.com

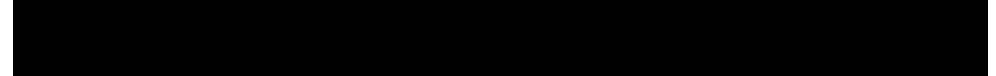
tune-models.com

+ 49 171 990 94 32

#tunefamily



rieke sproten



MODA TECH

ESTA PRIMAVERA LOS COLORES
SE UNEN A LA AVANZADA
TECNOLOGÍA DE SAMSUNG.
Fotografías por José Moraga
Producción de moda Romina Meier
Maquillaje y pelo UP Niki / Modelo Rieke de WLM
Asistentes de fotografía Victor Salgado y Eduardo Mortheiru

tune models

+ 49 171 990 94 32

mail@tune-models.com

tune-models.com

#tunefamily



riekesproten



tune models

mail@tune-models.com

tune-models.com

+ 49 171 990 94 32

#tunefamily



rieke sproten



tune models

mail@tune-models.com

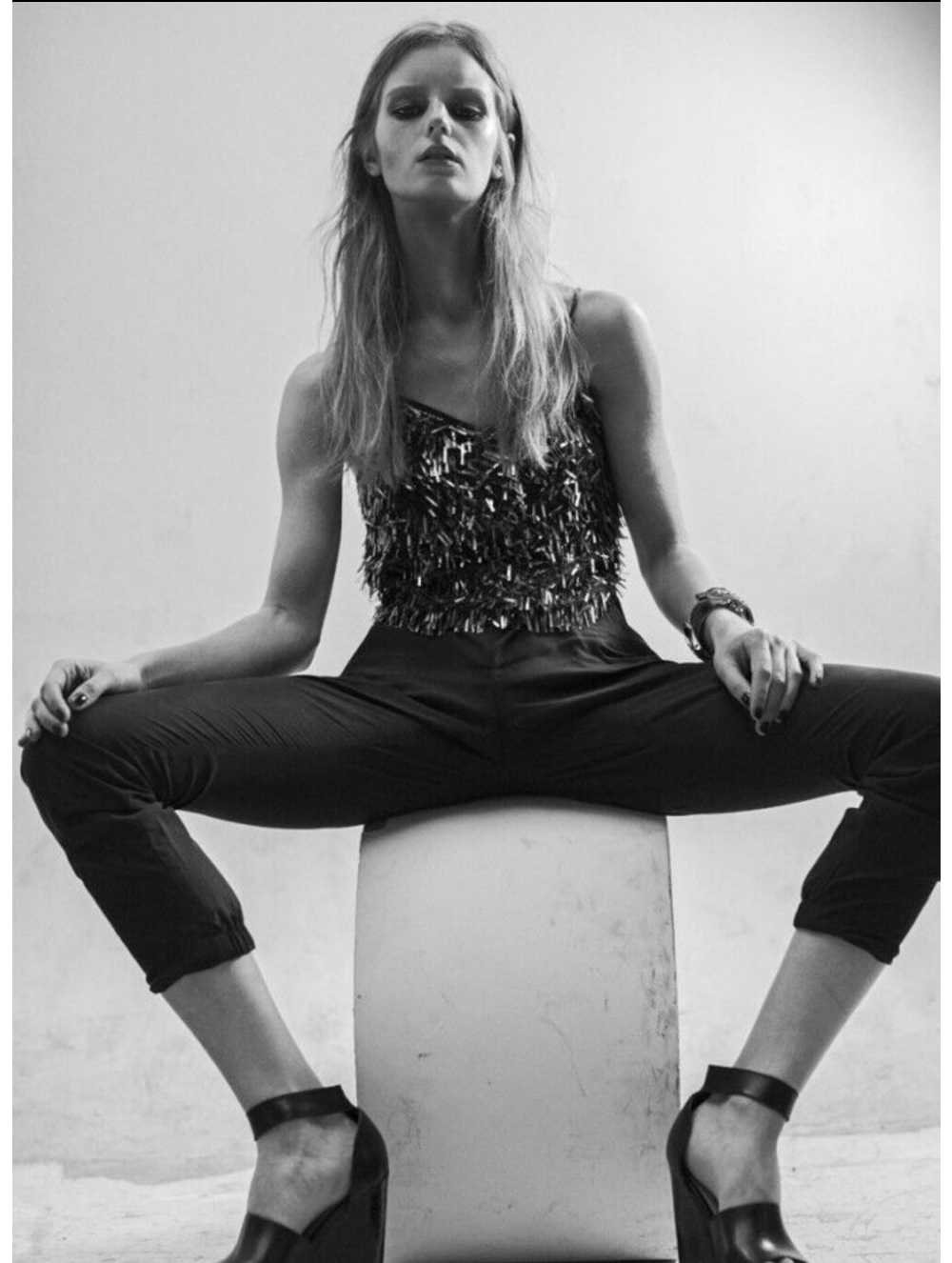
tune-models.com

+ 49 171 990 94 32

#tunefamily



rieke sproten



tune models

+ 49 171 990 94 32

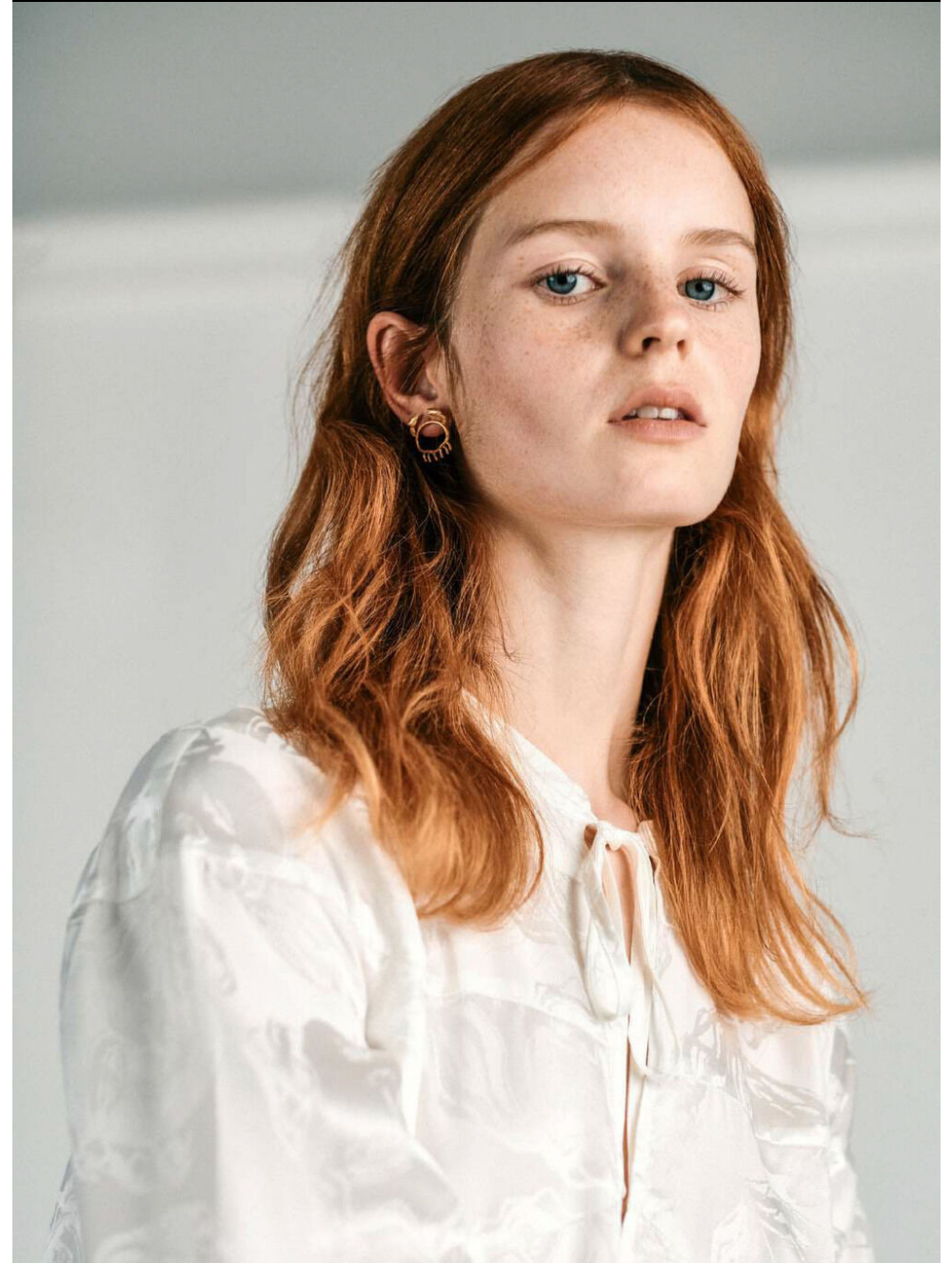
mail@tune-models.com

tune-models.com

#tunefamily



rieke sproten



tune models

mail@tune-models.com

+ 49 171 990 94 32

tune-models.com

#tunefamily

TM
TUNE MODELS



JFW
25th anniversary

the spring/summer issue

GOOD AS GOLD
ETHICS ROCKET TO THE TOP OF THE JEWELLERY AGENDA

SLOW DOWN
IS FAST FASHION'S REIGN COMING TO AN END?

TICK TOCK
OUR GUIDE TO THE CHICEST WATCH TRENDS OF 2018

NAVEL GAZING
ARTISTS LOOK CLOSER TO HOME FOR INSPIRATION

REST & REVIVE
DETOXING IN A SECLUDED SANCTUARY ON KOH SAMUI

FASHIONABLE CHOICES THAT WILL MAKE YOU, AND THE ENVIRONMENT, FEEL FABULOUS

Stylish
sustainability

PRINTED IN THE UK
669
9 771567 299008

rieke sproten

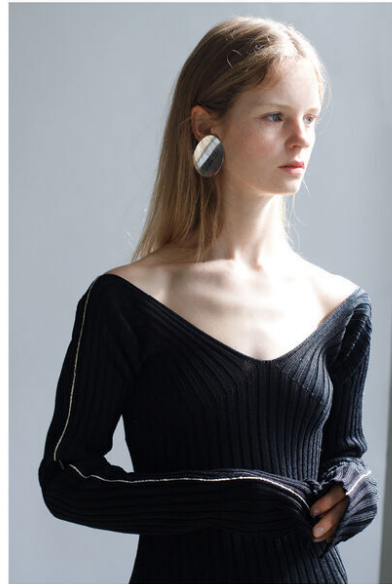
tune models

mail@tune-models.com

+ 49 171 990 94 32

tune-models.com

#tunefamily



rieke sproten

tune models

mail@tune-models.com

tune-models.com

+ 49 171 990 94 32

#tunefamily

TM
TUNE MODELS



rieke sproten



tune models

mail@tune-models.com

+ 49 171 990 94 32

tune-models.com

#tunefamily



rieke sproten



SATIN BRA T02 SATIN CAPELET SATIN
SKIRT: LEATHER BUCKLE AND SATIN GIBSON
HEELS: AL DORADO

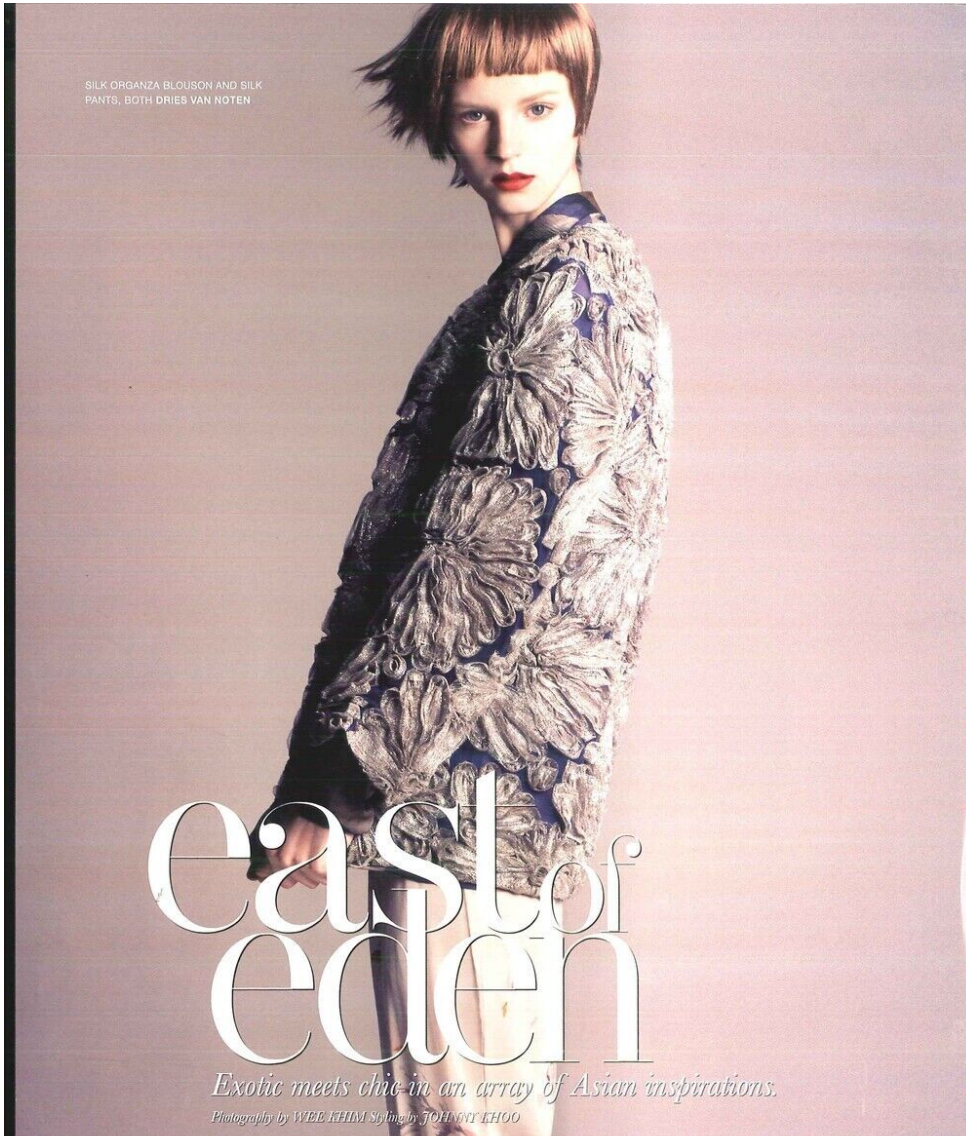
tune models

+ 49 171 990 94 32

mail@tune-models.com

tune-models.com

#tunefamily



rieke sproten



tune models

mail@tune-models.com

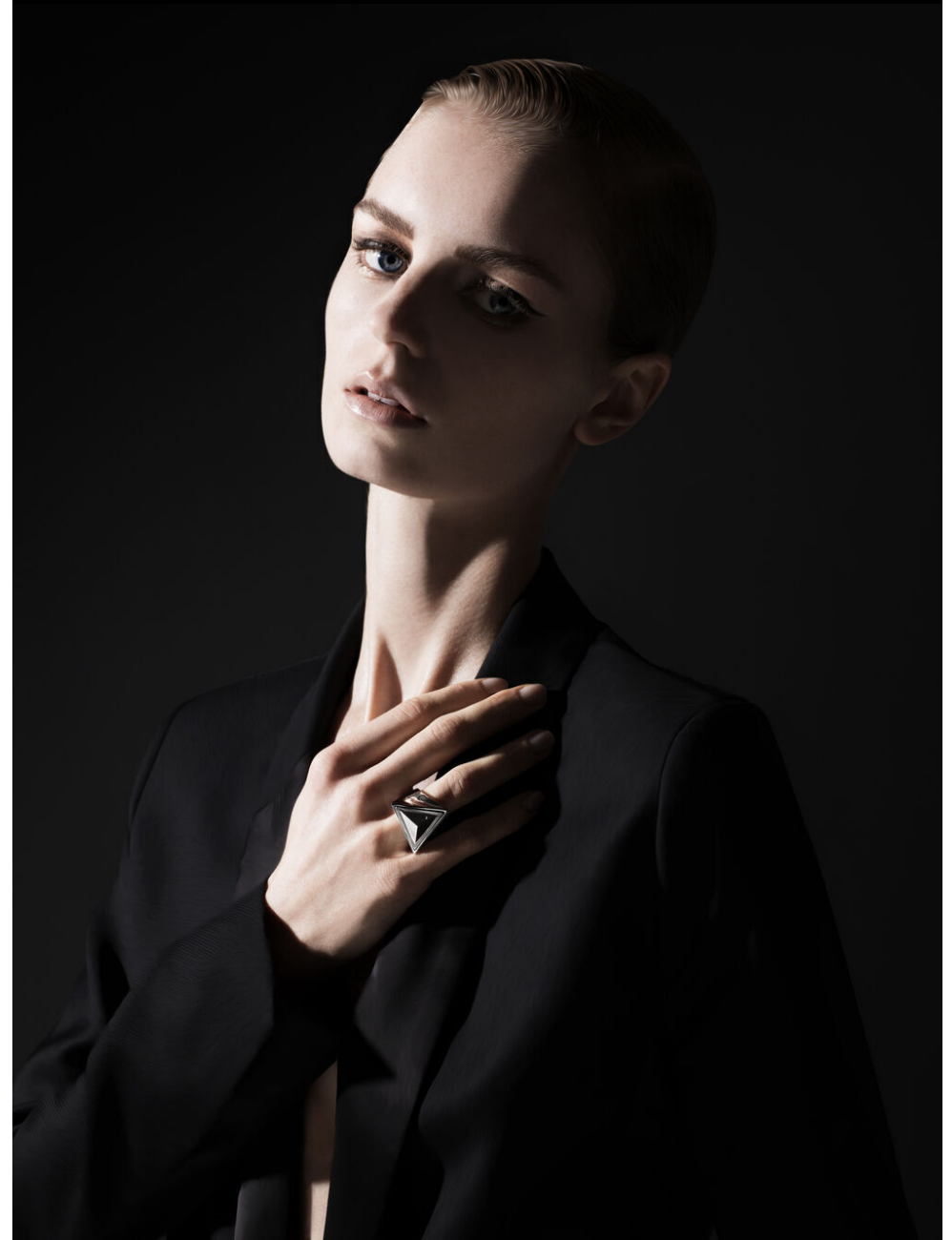
+ 49 171 990 94 32

tune-models.com

#tunefamily



rieke sproten



tune models

mail@tune-models.com

tune-models.com

+ 49 171 990 94 32

#tunefamily



rieke sproten



Steel Works

Silver on the inner corner of the eye can push up the drama – a look so apt for this season's strong peepers. Draw a smooth line along the eye socket and soften the colour with a brush for a sexy, smouldering effect. Keep this for an evening party.

L'ORÉAL PARIS COLOR CHROME EYELINER IN SILVER LIGHTNING. SHISEIDO SHIMMERING CREAM EYE COLOR IN SV810; URBAN DECAY 24/7 GLIDE ON EYELINE IN MILDEW. CHANEL ILLUSION D'OMBRE EYESHADOW IN EPATANT

tune models

mail@tune-models.com

+ 49 171 990 94 32

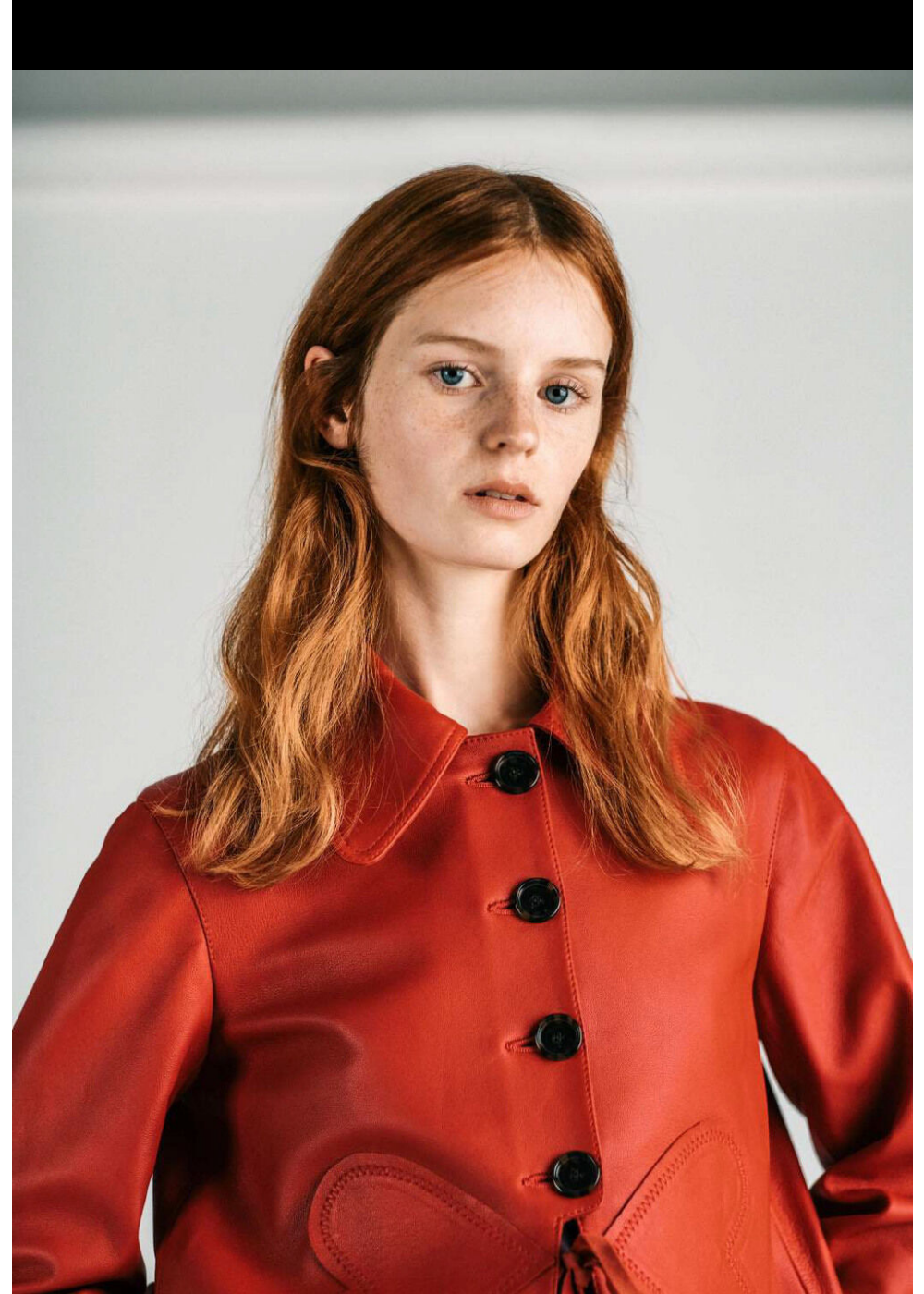
tune-models.com

#tunefamily





rieke sproten



tune models

mail@tune-models.com

tune-models.com

+ 49 171 990 94 32

#tunefamily



riekesproten

tune models

mail@tune-models.com

+ 49 171 990 94 32

tune-models.com

#tunefamily



rieko sproten



tune models

mail@tune-models.com

tune-models.com

+ 49 171 990 94 32

#tunefamily



riekesproten



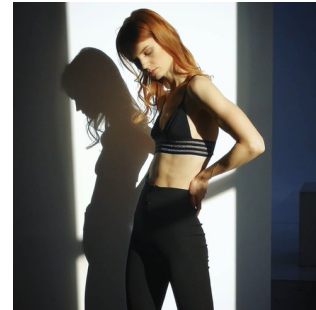
tune models

mail@tune-models.com

tune-models.com

+ 49 171 990 94 32

#tunefamily



rieke sproten

tune models

mail@tune-models.com

tune-models.com

+ 49 171 990 94 32

#tunefamily



FACTS & EXPERIENCE

NATIONALITY	BELGIAN
ORIGIN	BELGIAN
LANGUAGES	GERMAN, SPANISH, ENGLISH, FRENCH, DUTCH
DRIVERS LICENSE	B
PRONOUN	SHE/HER
NUTRITION	PESCITARIAN
TALENTS	ACTING, DANCING, DJANE (HOUSE & ELECTRONIC)
SPORTS	YOGA, BALLET, RYTHM SPORTS GYMNASTICS, RUNNING, FITNESS, PILATHES, HIKING, SWIMMING
AGE	32y.
ORIGIN	BELGIAN
CLIENTS	ALEXA CHUNG

riekesproten

CLIENTS

CITIZEN K
CLIO GOLDBRENNER
DIAMANTI PER TUTTI
IO DONNA
ISSUE
JFW MAGAZINE
MAKE MAGAZINE
MARELLA
NASTY MAGAZINE
NOVEVITE
PHOENIX MAGAZINE
SABATO MAG
SICKY MAGAZINE
VOGUE
VOGUE ITALIA

PHOTOGRAPHERS

CARLOS ORTEGA
JAIME ARRAU
TONY ELLIS

tune models

+ 49 171 990 94 32

mail@tune-models.com

tune-models.com

#tunefamily