

height	184	chest	102	dress	50/
hair	darkblonde	waist	84	collar	0
eyes	blue	hips	98	shoes	43



jason field



tune models

+ 49 171 990 94 32

mail@tune-models.com

tune-models.com

#tunefamily



jason field



tune models

+ 49 171 990 94 32

mail@tune-models.com

tune-models.com

#tunefamily



jason field

CHRIST



tune models

+ 49 171 990 94 32

mail@tune-models.com

tune-models.com

#tunefamily



jason field



tune models

+ 49 171 990 94 32

mail@tune-models.com

tune-models.com

#tunefamily



jason field



tune models

+ 49 171 990 94 32

mail@tune-models.com

tune-models.com

#tunefamily

TM
tune MODELS



jason field



tune models

+ 49 171 990 94 32

mail@tune-models.com

tune-models.com

#tunefamily



jason field



tune models

+ 49 171 990 94 32

mail@tune-models.com

tune-models.com

#tunefamily



jason field



tune models

+ 49 171 990 94 32

mail@tune-models.com

tune-models.com

#tunefamily



jason field



tune models

mail@tune-models.com

tune-models.com

+ 49 171 990 94 32

#tunefamily



jason field



tune models

mail@tune-models.com

tune-models.com

+ 49 171 990 94 32

#tunefamily



jason field



GOTTSEIDANK Individualität pur! Passend zu jedem Anlass bietet dieses exklusive Trachtengewand die Möglichkeit, zwischen zwei Verschlusstechniken der Schürze zu wählen: einer außergewöhnlichen silbernen Schließe mit Blickfang-Garantie und einer traditionellen Schleife. Harmonisch überzeugt der Mann in einer Westen-Hosen-Kombination mit dezenter Streifenmusterung. gottseidank.com
ACCESSOIRES Sie: Ohrstecker: Vanyke, Strumpfhose: Gottseidank, Schuhe: Lack-Mary-janes von Chloé, Dirndlstoff: Weberer Höfer, Chiemsee, Herrenweste: Leichtfried Loden.

tune models

+ 49 171 990 94 32

mail@tune-models.com

tune-models.com

#tunefamily



jason field



tune models

+ 49 171 990 94 32

mail@tune-models.com

tune-models.com

#tunefamily



jason field



tune models

+ 49 171 990 94 32

mail@tune-models.com

tune-models.com

#tunefamily

TM
TUNE MODELS



jason field



tune models

+ 49 171 990 94 32

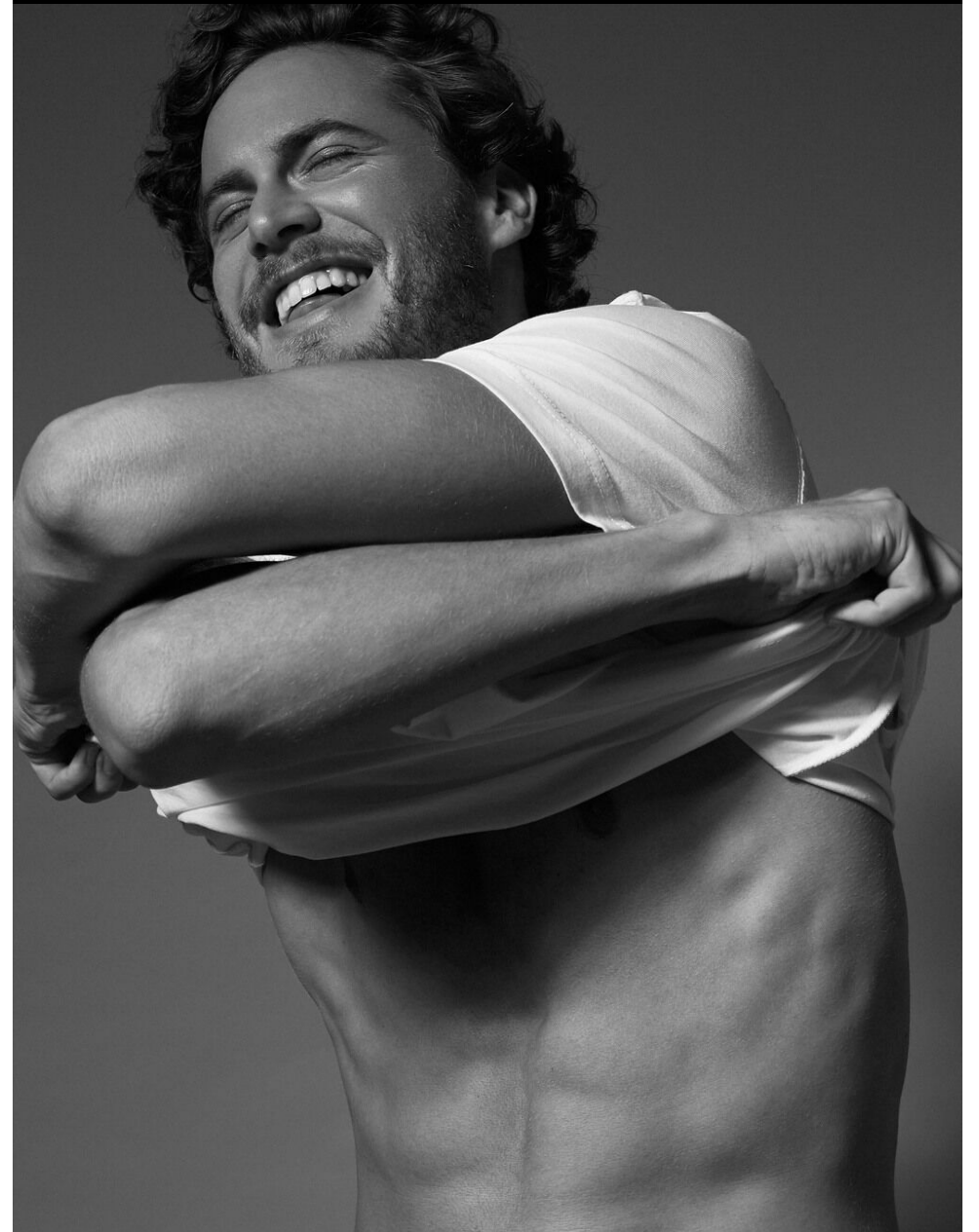
mail@tune-models.com

tune-models.com

#tunefamily



jason field



tune models

mail@tune-models.com

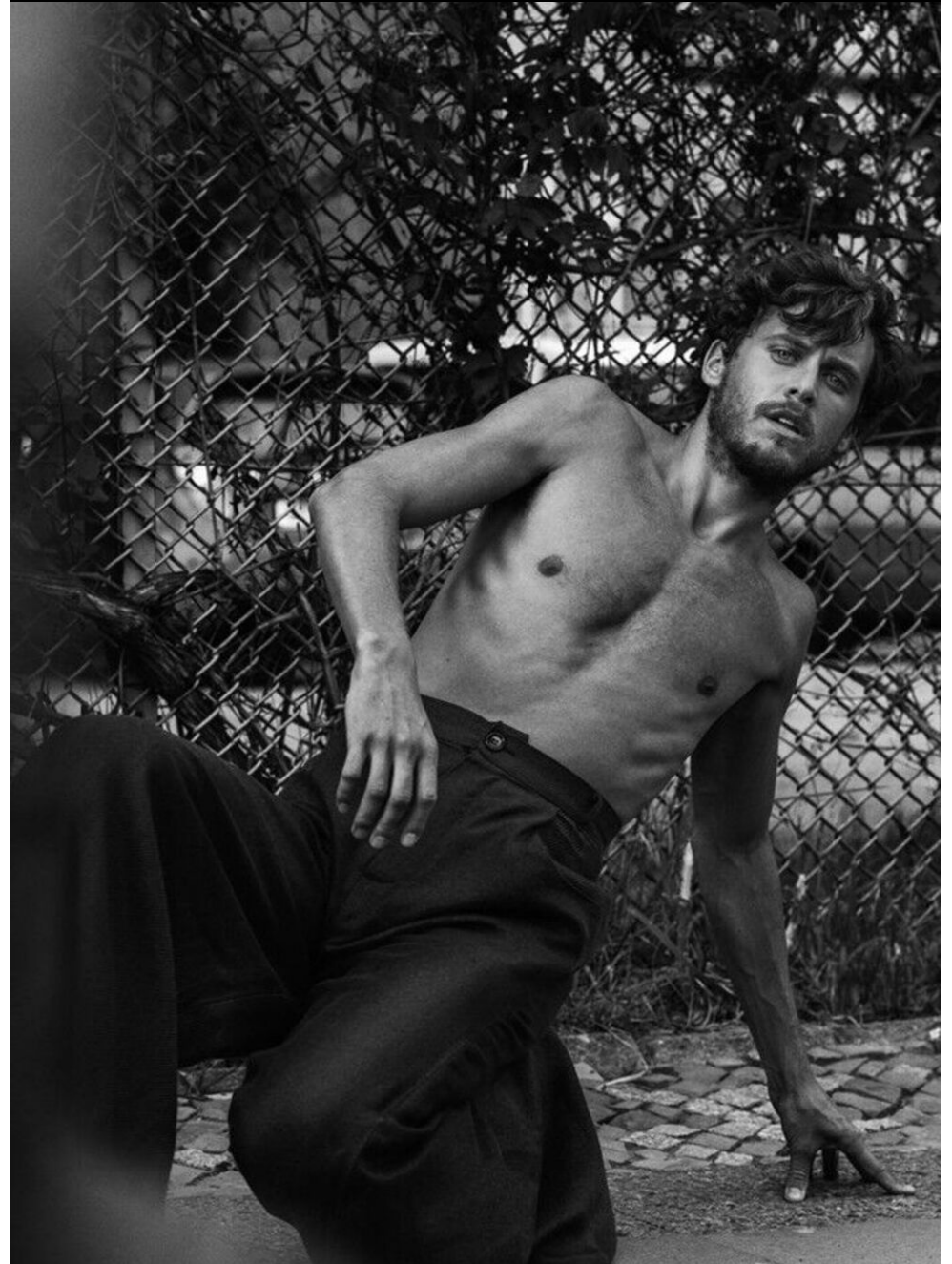
tune-models.com

+ 49 171 990 94 32

#tunefamily



jason field



tune models

+ 49 171 990 94 32

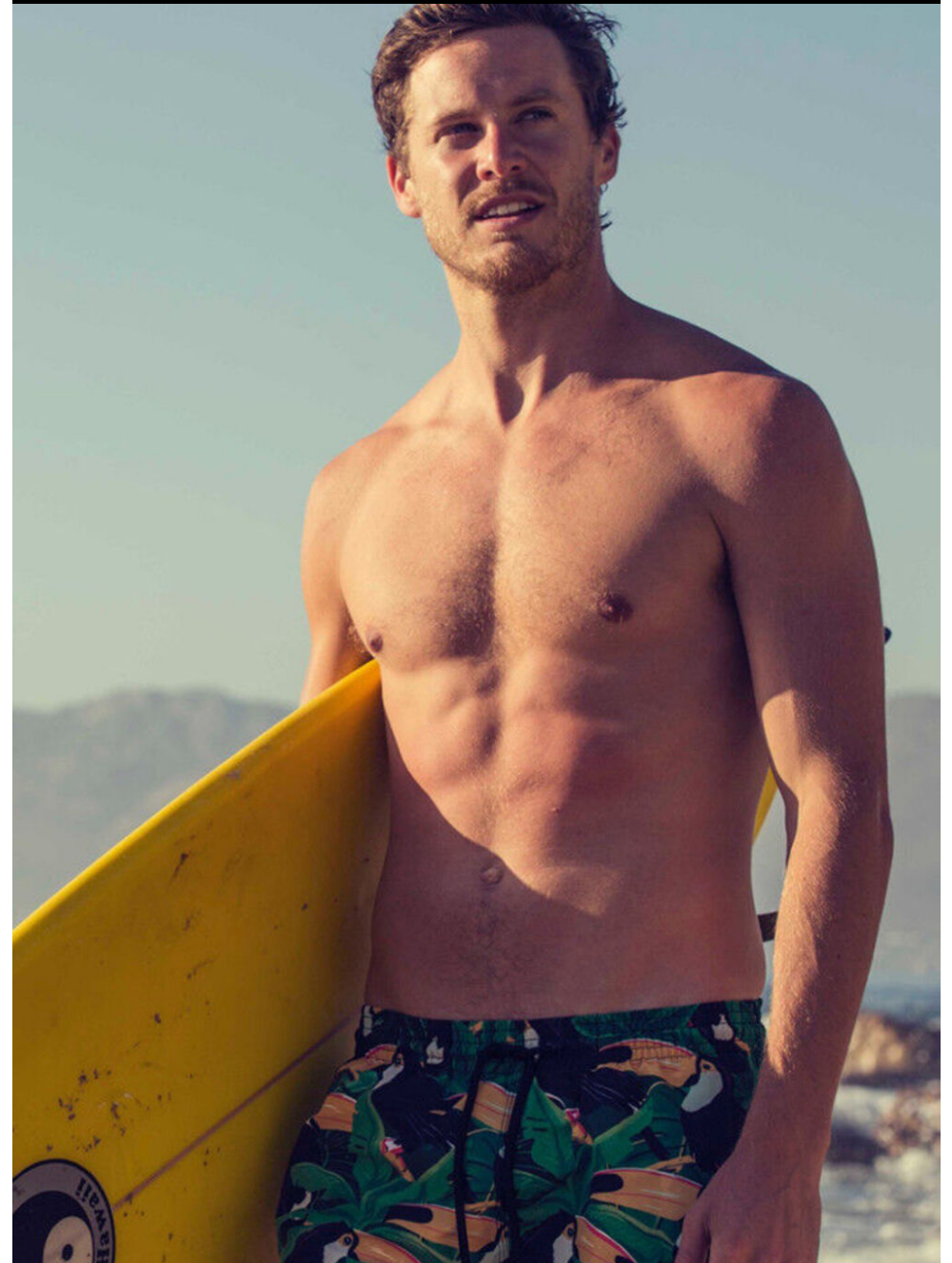
mail@tune-models.com

tune-models.com

#tunefamily



jason field



tune models

+ 49 171 990 94 32

mail@tune-models.com

tune-models.com

#tunefamily



jason field



tune models

+ 49 171 990 94 32

mail@tune-models.com

tune-models.com

#tunefamily



jason field



tune models

+ 49 171 990 94 32

mail@tune-models.com

tune-models.com

#tunefamily



jason field



tune models

+ 49 171 990 94 32

mail@tune-models.com

tune-models.com

#tunefamily



jason field



tune models

+ 49 171 990 94 32

mail@tune-models.com

tune-models.com

#tunefamily



jason field



tune models

mail@tune-models.com

tune-models.com

+ 49 171 990 94 32

#tunefamily



jason field



tune models

mail@tune-models.com

tune-models.com

+ 49 171 990 94 32

#tunefamily



jason field



tune models

mail@tune-models.com

tune-models.com

+ 49 171 990 94 32

#tunefamily





FACTS & EXPERIENCE

TALENTS	ACTING
SPORTS	RUGBY, CRICKET, FOOTBALL, SURFING, SKATING, RUNNING, YOGA
AGE	35y.
ORIGIN	AUSTRALIA

AGENCY'S WORLDWIDE

SQUARE, GENEVA
THE FACE, PARIS
IMM, BRUSSELS
BLOW, BARCELONA
JUST, LISBON
MATT FACES, AMSTERDAM

AGENCY'S WORLDWIDE

ADDICTED TO MODELS, VIENNA
FLASH, ISTANBUL
THE CIRCLE, CAPE TOWN
CASTAWAY, BALI
VIVIENS, SYDNEY

STAY TUNED.

jason field

tune models

+ 49 171 990 94 32

mail@tune-models.com

tune-models.com

#tunefamily