



sophie braunsfeld

height	178	bust	79	dress	34/
hair	darkblonde	waist	60	bra	b75
eyes	bluegreen	hips	87	shoes	39,5



tune models

+ 49 171 990 94 32

mail@tune-models.com

tune-models.com

#tunefamily



sophie braunsfeld



tune models

mail@tune-models.com

tune-models.com

+ 49 171 990 94 32

#tunefamily



sophie braunsfeld



tune models

+ 49 171 990 94 32

mail@tune-models.com

tune-models.com

#tunefamily



sophie braunsfeld



tune models

mail@tune-models.com

tune-models.com

+ 49 171 990 94 32

#tunefamily



sophie braunsfeld



tune models

+ 49 171 990 94 32

mail@tune-models.com

tune-models.com

#tunefamily



sophie braunsfeld



tune models

mail@tune-models.com

tune-models.com

+ 49 171 990 94 32

#tunefamily



sophie braunsfeld



tune models

mail@tune-models.com

tune-models.com

+ 49 171 990 94 32

#tunefamily



sophie braunsfeld



tune models

mail@tune-models.com

tune-models.com

+ 49 171 990 94 32

#tunefamily



sophie braunsfeld



BLACK CARPET

FOTO THOMAS KRAPPITZ
SERVIZIO RACHELE BAGNATO

Top girocollo e pantaloni a vita alta in seta, cappello di feltro con lunga visetta e perline applicate, tutto Giorgio Armani. Pagina accanto. Gilet di pelle intrecciata, T-shirt e bermuda di tela con profili di pelle, tutto Louis Vuitton. Orecchini d'oro, Peruffo Jewelry. Scarpe di pelle, Pierre Hardy.

tune models

mail@tune-models.com

+ 49 171 990 94 32

tune-models.com

#tunefamily



sophie braunsfeld



피프 솔리브 데님褲 Isabel Marant, 과감한 슬릿 디테일의 데님 스커트 Givenchy,
레이어드한 워싱 데님 랩스커트 Jani Song, 크리스탈 버클 장식 풀 Miu Miu, 골드 초커 테크리스 Gucci.

tune models

mail@tune-models.com

tune-models.com

+ 49 171 990 94 32

#tunefamily



sophie braunsfeld



tune models

mail@tune-models.com

tune-models.com

+ 49 171 990 94 32

#tunefamily



sophie braunsfeld



CON SPACCHI, SCOLLI E STRASCICHI IN VOLO.

IL NERO TORNA PROTAGONISTA

tune models

mail@tune-models.com

tune-models.com

+ 49 171 990 94 32

#tunefamily



sophie braunfeld



tune models

mail@tune-models.com

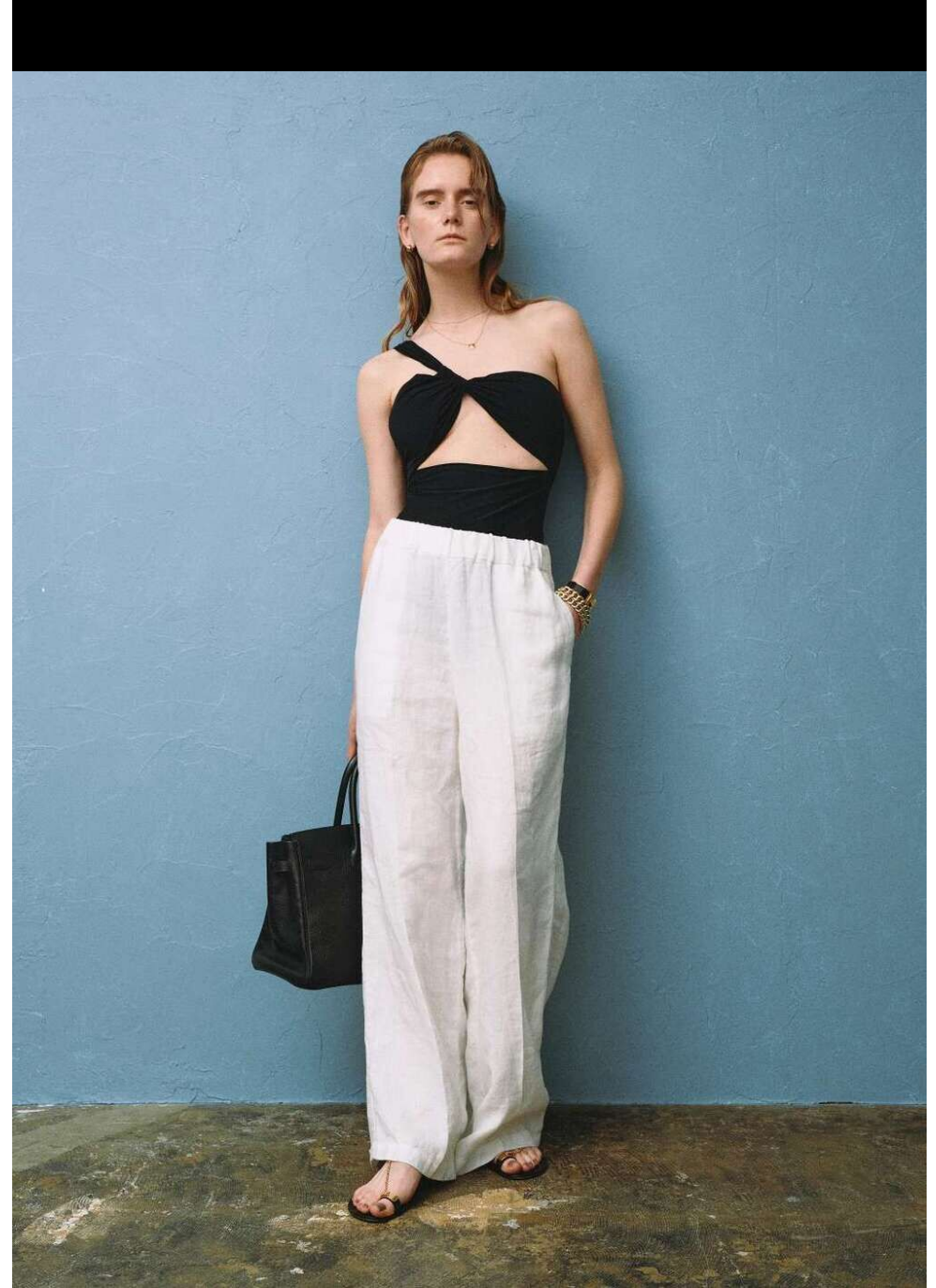
tune-models.com

+ 49 171 990 94 32

#tunefamily



sophie braunsfeld



tune models

mail@tune-models.com

tune-models.com

+ 49 171 990 94 32

#tunefamily



sophie braunsfeld



tune models

+ 49 171 990 94 32

mail@tune-models.com

tune-models.com

#tunefamily



sophie braunsfeld



tune models

mail@tune-models.com

tune-models.com

+ 49 171 990 94 32

#tunefamily



sophie braunsfeld



tune models

mail@tune-models.com

tune-models.com

+ 49 171 990 94 32

#tunefamily



sophie braunsfeld



tune models

mail@tune-models.com

tune-models.com

+ 49 171 990 94 32

#tunefamily



sophie braunsfeld



tune models

mail@tune-models.com

+ 49 171 990 94 32

tune-models.com

#tunefamily



sophie braunfeld

tune models

mail@tune-models.com

tune-models.com

+ 49 171 990 94 32

#tunefamily



sophie braunsfeld



tune models

mail@tune-models.com

tune-models.com

+ 49 171 990 94 32

#tunefamily



sophie braunsfeld



tune models

mail@tune-models.com

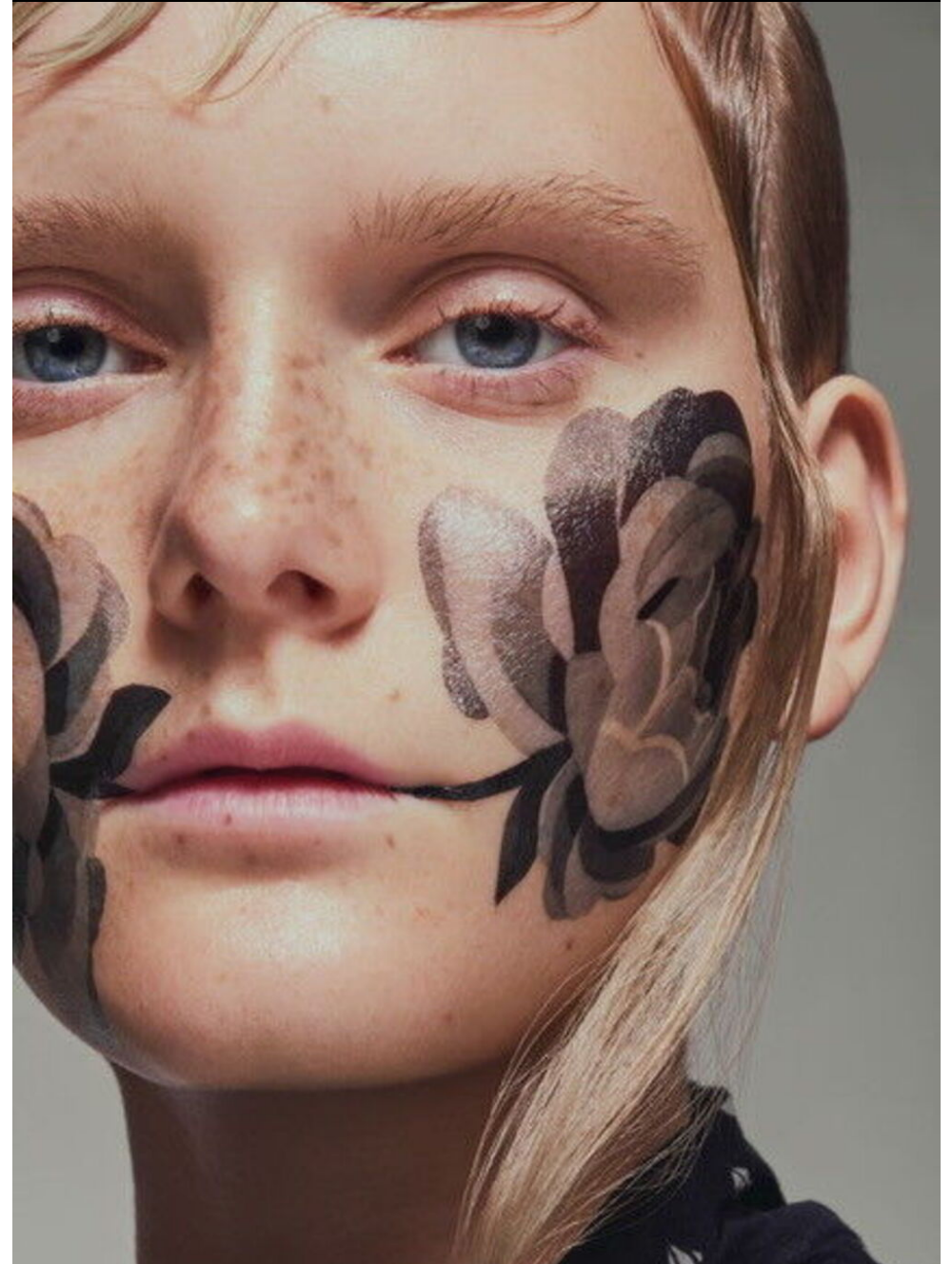
tune-models.com

+ 49 171 990 94 32

#tunefamily



sophie braunsfeld



tune models

mail@tune-models.com

tune-models.com

+ 49 171 990 94 32

#tunefamily



sophie braunsfeld



Diese Seite:
Lederblazer: **Paige**,
ca. 730 €. Crop-Pullover:
Michael Kors Collection,
ca. 690 €. Rollkragen-
pullover: **Liebeskind**
Berlin, ca. 90 €. Karo-
rock: **Zara**, ca. 50 €.
Hose: **C&A**, ca. 20 €.
Stiefeletten: **Tamaris**,
ca. 80 €. Mütze: **Stetson**,
ca. 50 €. Ohrringe aus
925er Sterlingsilber,
ca. 120 €. Ring aus 925er
Sterlingsilber, ca. 180 €,
beides von **Thomas Sabo**

Links:
Puffer Jacket: **s.Oliver**,
ca. 100 €. Steppweste
mit Kapuze: **Brax**,
ca. 180 €. Netzbody:
Tezenis, ca. 20 €. Rock
mit Schlitz: **Diesel**,
ca. 250 €. Stiefeletten mit
Blockabsatz: **Deich-**
mann, ca. 45 €. Ohrringe:
Anna + Nina, ca. 60 €

tune models

+ 49 171 990 94 32

mail@tune-models.com

tune-models.com

#tunefamily



sophie braunsfeld



tune models

mail@tune-models.com

tune-models.com

+ 49 171 990 94 32

#tunefamily



sophie braunsfeld



tune models

mail@tune-models.com

tune-models.com

+ 49 171 990 94 32

#tunefamily

TM
TUNE MODELS



sophie braunsfeld



tune models

+ 49 171 990 94 32

mail@tune-models.com

tune-models.com

#tunefamily

MODE



sophie braunfeld

tune models

mail@tune-models.com

+ 49 171 990 94 32

tune-models.com

#tunefamily



sophie braunsfeld



tune models

mail@tune-models.com

tune-models.com

+ 49 171 990 94 32

#tunefamily



sophie braunsfeld



tune models

mail@tune-models.com

tune-models.com

+ 49 171 990 94 32

#tunefamily



sophie braunsfeld



tune models

mail@tune-models.com

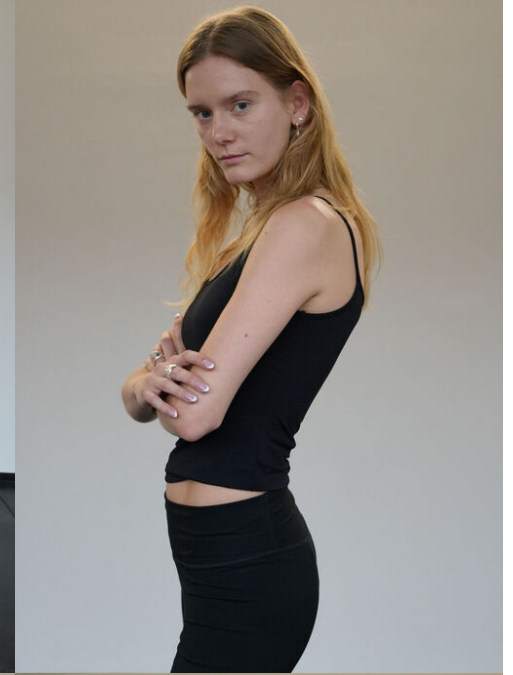
tune-models.com

+ 49 171 990 94 32

#tunefamily



sophie braunsfeld



tune models

mail@tune-models.com

tune-models.com

+ 49 171 990 94 32

#tunefamily



sophie braunsfeld



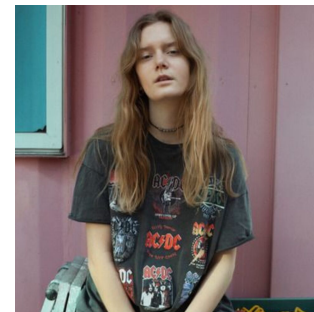
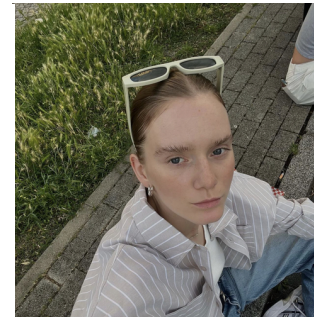
tune models

mail@tune-models.com

tune-models.com

+ 49 171 990 94 32

#tunefamily



sophie braunxfeld

tune models

mail@tune-models.com

tune-models.com

+ 49 171 990 94 32

#tunefamily



FACTS & EXPERIENCE

NUTRITION	VEGAN
SPORTS	TENNIS, PILATES, HOME WORKOUTS
AGE	26y.
ORIGIN	DEUTSCHLAND
CLIENTS	ATTICA MAG AVENUEL MAGAZINE BOLERO MAGAZINE CELFORD D MAGAZINE FAZ MAGAZINE GLAMOUR MAGAZINE GERMANY GRAZIA MAGAZINE GERMANY INDIE MAGAZINE JOLIE MAGAZINE LUXURY MAGAZINE

CLIENTS	MADAME FIGARO MAGAZINE NEIGHBOR MAGAZINE NITRO MAGAZINE NOBLESSE MAGAZINE NUMERO NL S. OLIVER SCHAUDERHEFT SINGLES MAGAZINE SLEEK MAGAZINE STYLER MAGAZINE THE GALLERIA MAGAZINE THEORY LUXE TOMORROWLAND VEIN MAGAZINE VOGUE MAGAZINE - KOREA
---------	--

PHOTOGRAPHERS	AKINORI ITO ANNA ROSA KRAU ASKIN PETERSON AVA PIVOT BEN HAMMER BOSUNG KIM DAEHAN CHAE DAVID OLDHAM ELIZAVETA PORODINA ERIK VON FRANKENBERG
---------------	---

sophie braunsfeld

tune models

mail@tune-models.com

+ 49 171 990 94 32

tune-models.com

#tunefamily



PHOTOGRAPHERS

EVA BAALES
FELIX WERINOS

HASEGAWA
HIROAKI ITANO
HORST DIEKGERDES
HYUNGOO PARK
JAEHOON KIM
JANNA TODE
JEN KRAUSE
JOGHA PARK
KATERINA TSATSANIS
KOSTAS AVGOULIS
MARCUS PAARMAN
MARKUS JANS
MARKUS PAARMAN
PIERRE BAILLY
RAUL RUZ
SANGMI
SEUNGHOOON LEE
THOMAS HAUSER
THOMAS KRAPPITZ

PHOTOGRAPHERS

YEONGJUN KIM
YOUNGJUN KIM

SHOWS

MASSIMO DUTTI
2016, MILAN

MOTHER AGENCY

TUNE MODEL MGMT

STAY TUNED.

sophie braunsfeld

tune models

mail@tune-models.com

+ 49 171 990 94 32

tune-models.com

#tunefamily