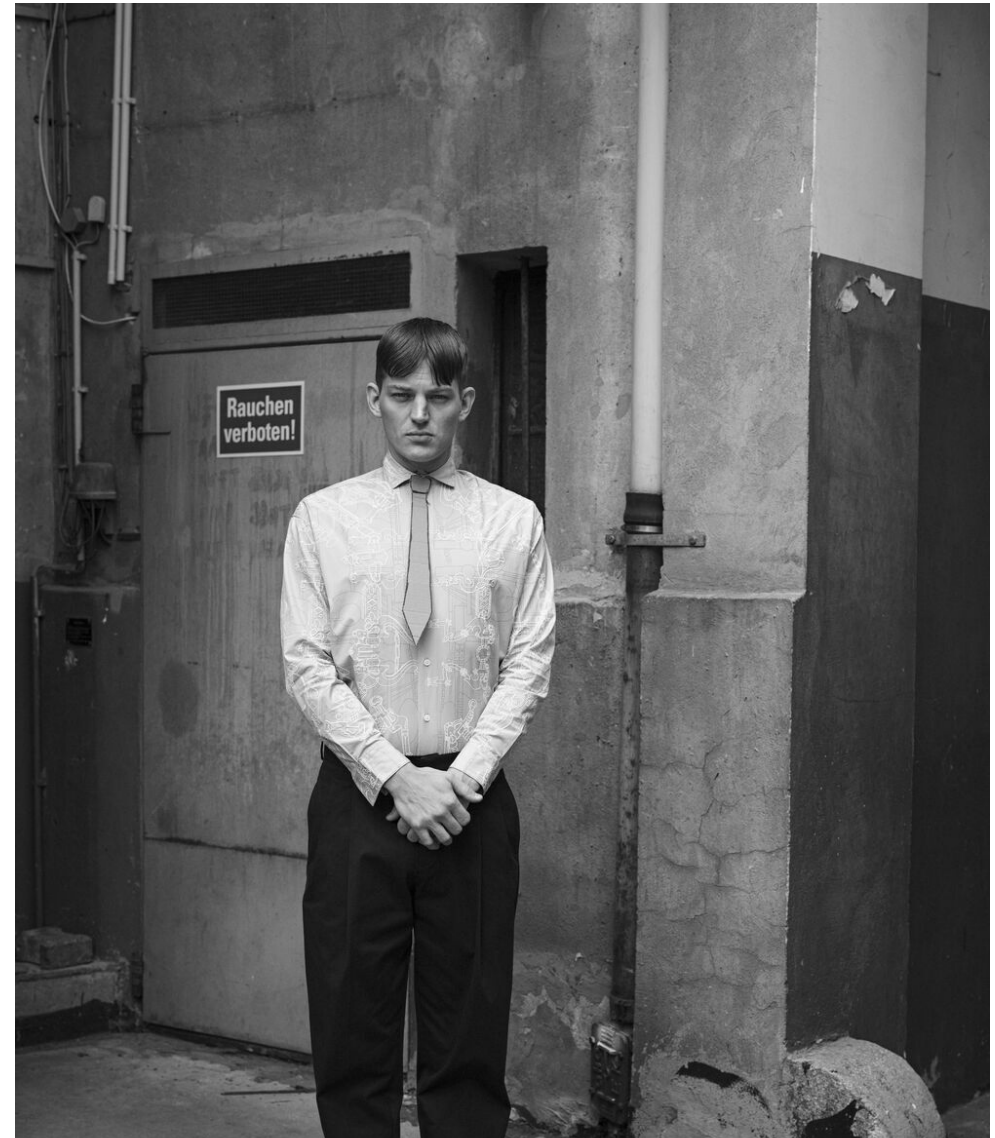


height	191	chest	104	dress	50/52
hair	blonde	waist	90	collar	44
eyes	blue	hips	105	shoes	45



sebastian sauve



tune models

+ 49 171 990 94 32

mail@tune-models.com

tune-models.com

#tunefamily

Z ZEGNA



sebastian sauve



tune models

mail@tune-models.com

+ 49 171 990 94 32

tune-models.com

#tunefamily



SEBASTIAN WEARS: TOP, ZARA MAN

sebastian sauve

tune models

mail@tune-models.com

+ 49 171 990 94 32

tune-models.com

#tunefamily

*TM*  
TUNE MODELS



sebastian sauve



tune models

mail@tune-models.com

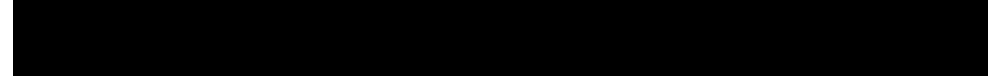
tune-models.com

+ 49 171 990 94 32

#tunefamily



sebastian sauve



tune models

mail@tune-models.com

+ 49 171 990 94 32

tune-models.com

#tunefamily

*TM*  
tune MODELS



sebastian sauve

tune models

mail@tune-models.com

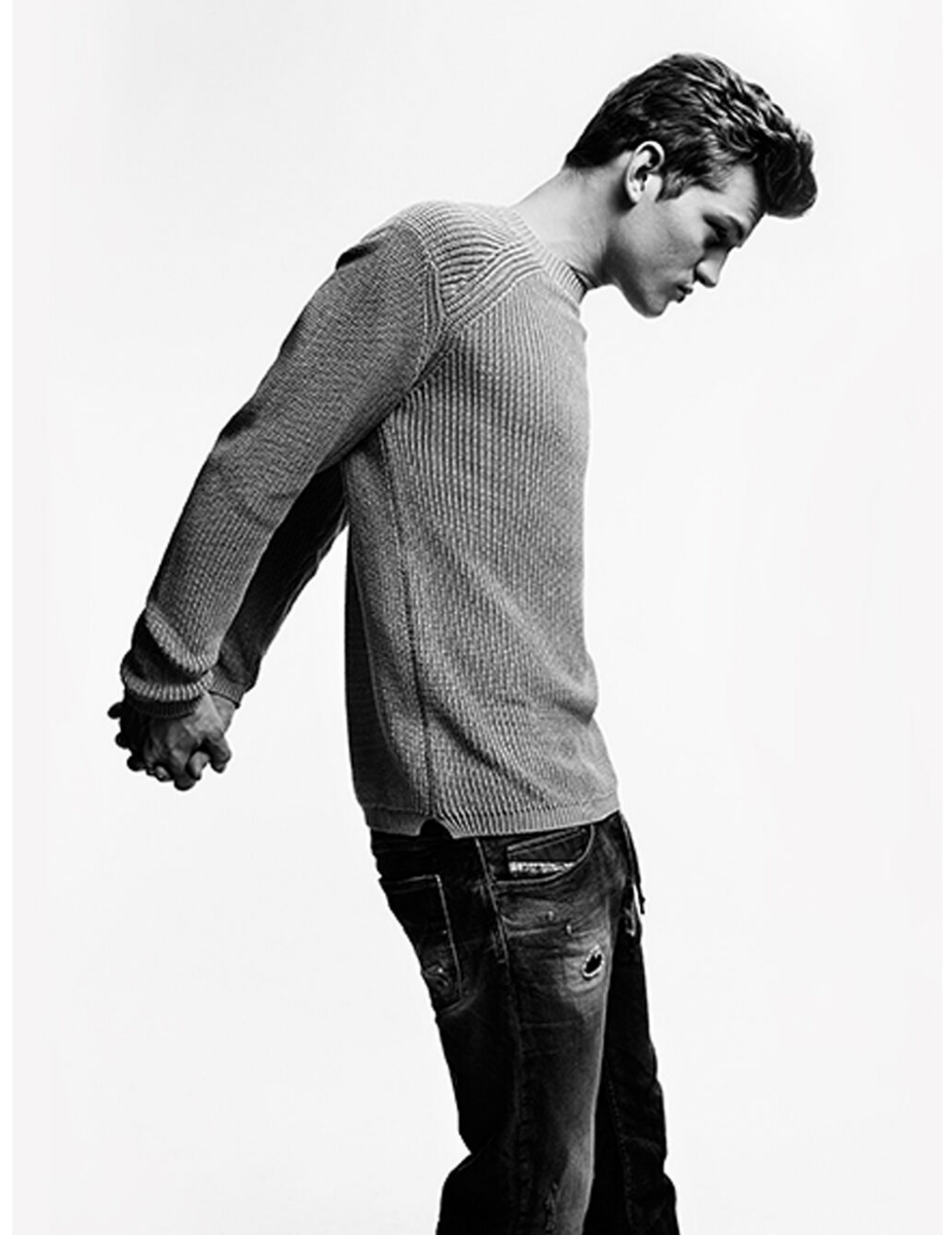
tune-models.com

+ 49 171 990 94 32

#tunefamily



sebastian sauve



tune models

mail@tune-models.com

tune-models.com

+ 49 171 990 94 32

#tunefamily

*TM*  
TUNE MODELS



sebastian sauve

# SALE



THE  
**REVERSE**  
ISSUE

tune models

+ 49 171 990 94 32

mail@tune-models.com

tune-models.com

#tunefamily





sebastian sauve



SHIRT / 825/833/90849/ 30873  
TIE / 825/833/90849/ 30861  
RING / 825/833/90849/ 30872

tune models

+ 49 171 990 94 32

mail@tune-models.com

tune-models.com

#tunefamily



sebastian sauve



tune models

mail@tune-models.com

+ 49 171 990 94 32

tune-models.com

#tunefamily



sebastian sauve



# BACK TO BLK

BLK ONM HAVE PRODUCED A  
SUPREMELY STRONG COLLECTION  
FOR AW '16, MIXING EARLY PUNK  
WITH NINETIES GRUNGE AND  
CLEAN MINIMALISM

PHOTOGRAPHY BY **JENNY BROUGH**  
FASHION BY **JOSEPH KOCHARIAN**

tune models

mail@tune-models.com

tune-models.com

+ 49 171 990 94 32

#tunefamily



THIS PAGE Alexander  
McQueen jacket £4,095;  
Barena shirt from a  
selection; Givenchy  
scarf £300; Off-White  
jeans £415 and belt from  
a selection; Christian  
Louboutin boots £845;  
OPPOSITE PAGE  
Off-White shirt £375;  
Tom Ford henley £345;  
Versace necklace £250

*TM*  
TUNE MODELS



sebastian sauve



tune models

+ 49 171 990 94 32

mail@tune-models.com

tune-models.com

#tunefamily



sebastian sauve

tune models

mail@tune-models.com

tune-models.com

+ 49 171 990 94 32

#tunefamily



sebastian sauve

tune models

mail@tune-models.com

tune-models.com

+ 49 171 990 94 32

#tunefamily



1/18 JACKET **petrou/man**  
 UNDERWEAR **Zickist**  
 SOCKS **ben shermanso**  
 1/11 COAT **jose duran**  
 PULLOVER **robert geller**

Vivienne Westwood



VIVIENNE WESTWOOD  
 Designed by: Vivienne Westwood and Andreas Kronthaler  
 in: London  
 since: 1971  
 famous for: eccentric combinations of historical clothing  
 at mientus since: 1995  
 look 2019: exciting range of statement pieces  
 at mientus SCHLÖTERSTRASSE

Blazer €745 Pullover €250 Hemd €205 Hose €440

sebastian sauve

tune models

mail@tune-models.com

+ 49 171 990 94 32

tune-models.com

#tunefamily





pozitiv WEHMENTS, X RACKINTOSH, rola SAINT LAURENT, kosulja  
ZADIMBAROVNE, pantalone SQUASH & SODA, prstenje ELF CRAFT

sebastian sauve



Sebastian  
wears leather  
parka 7, £1,145,  
t shirt 48, £95,  
leather pants 25,  
£695, all by  
Blk Dnm

tune models

+ 49 171 990 94 32

mail@tune-models.com

tune-models.com

#tunefamily

TM  
tune MODELS



sebastian sauve

tune models

mail@tune-models.com

+ 49 171 990 94 32

tune-models.com

#tunefamily



sebastian sauve



IN PIEDI: ABITO HACKETT LONDON 900 EURO, CAMICIA ANTONY MORATO 50 EURO, CINTURA TRUSSARDI 200 EURO, CRAVATTA SILVIO FIORELLO 120 EURO.  
SEDUTO: ABITO RALPH LAUREN BLACK LABEL, CAMICIA PRADA 320 EURO, CRAVATTA SILVIO FIORELLO 120 EURO

NELLA PAGINA A FIANCO  
IN PIEDI: ABITO E CAMICIA BRIONI 3.950 EURO, OROLOGIO GUCCI  
SEDUTO: ABITO DSQUARED2, CAMICIA NARA CAMICIE, CRAVATTA HERMÈS 150 EURO, FERMACRAVATTA PAUL SMITH ACCESSORIES 68 EURO, OROLOGIO CARTIER 2.950 EURO

GQ FEBBRAIO 2014

tune models

+ 49 171 990 94 32

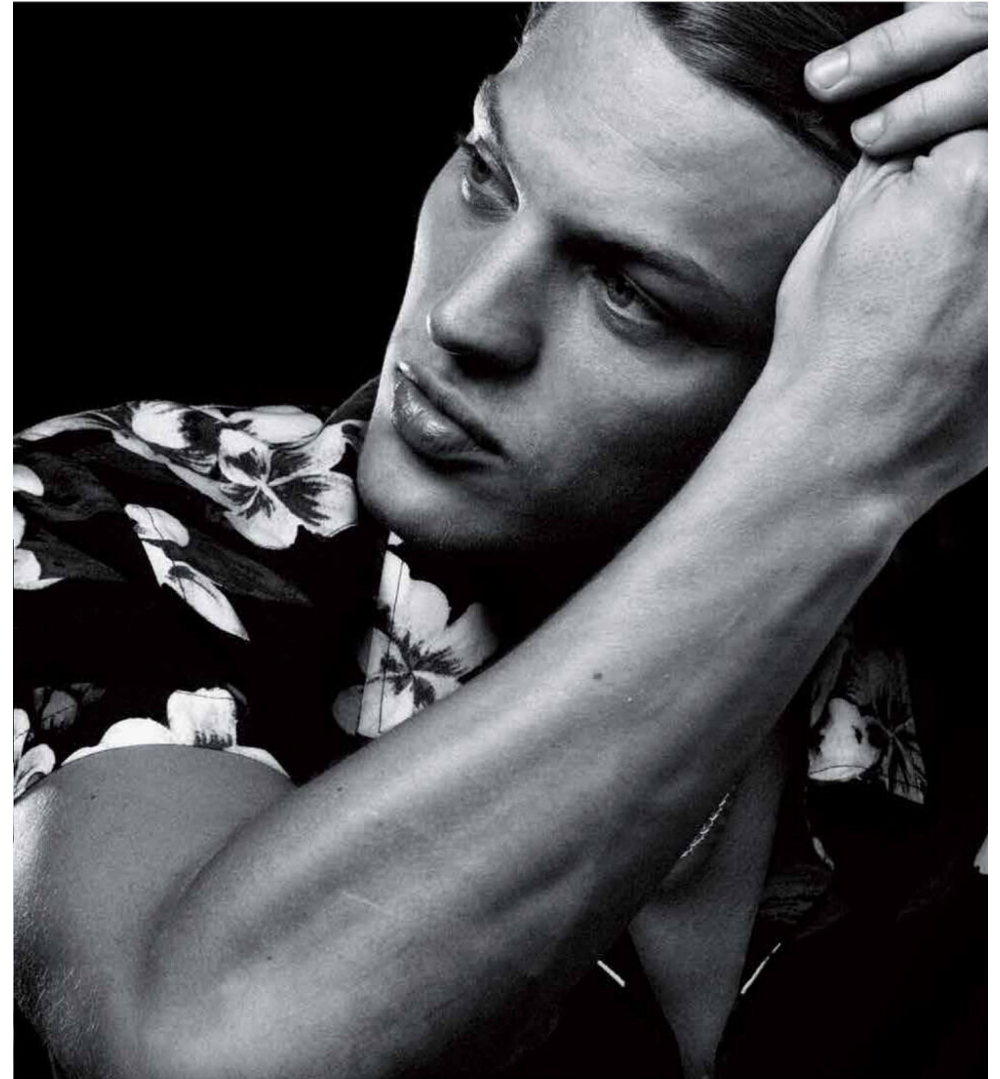
mail@tune-models.com

tune-models.com

#tunefamily



sebastian sauve



CALEO MAGAZINE  
THE REVERSE ISSUE

tune models

mail@tune-models.com

+ 49 171 990 94 32

tune-models.com

#tunefamily



RIVER ISLAND

sebastian sauve



© 2014 River Island

tune models

mail@tune-models.com

+ 49 171 990 94 32

tune-models.com

#tunefamily

TM  
TUNE MODELS



sebastian sauve



tune models

+ 49 171 990 94 32

mail@tune-models.com

tune-models.com

#tunefamily

*TM*  
tune MODELS

**GO** SOUTH AFRICA **Style**  
THE DEFINITIVE GUIDE TO MEN'S FASHION  
GENTLEMEN'S QUARTERLY • AUTUMN/WINTER 2014 VOLUME 5 R79.90 INCL VAT



sebastian sauve

tune models

mail@tune-models.com

+ 49 171 990 94 32

tune-models.com

#tunefamily



sebastian sauve



tune models

mail@tune-models.com

tune-models.com

+ 49 171 990 94 32

#tunefamily





sebastian sauve



tune models

mail@tune-models.com

tune-models.com

+ 49 171 990 94 32

#tunefamily



sebastian sauve



tune models

mail@tune-models.com

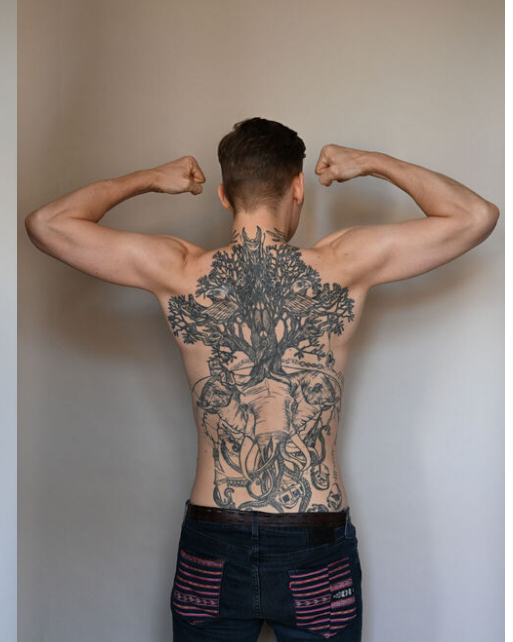
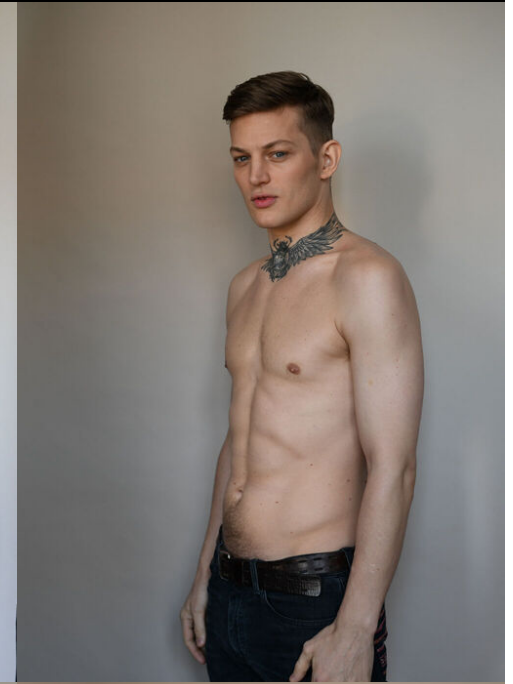
tune-models.com

+ 49 171 990 94 32

#tunefamily



sebastian sauve



tune models

mail@tune-models.com

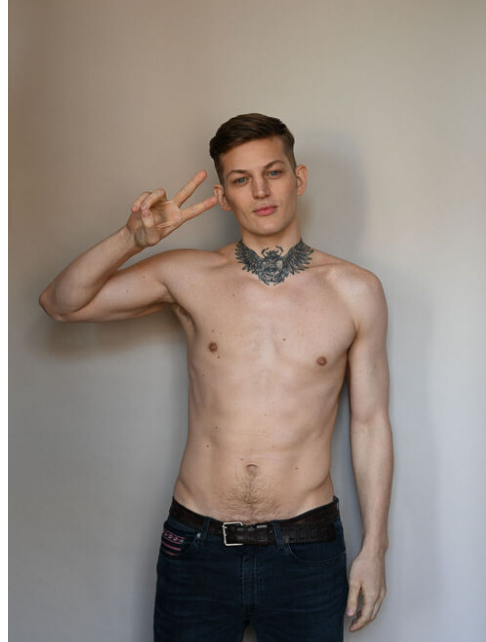
tune-models.com

+ 49 171 990 94 32

#tunefamily



sebastian sauve



tune models

mail@tune-models.com

tune-models.com

+ 49 171 990 94 32

#tunefamily



sebastian sauve



tune models

mail@tune-models.com

tune-models.com

+ 49 171 990 94 32

#tunefamily



sebastian sauve



tune models

mail@tune-models.com

tune-models.com

+ 49 171 990 94 32

#tunefamily



sebastian sauve



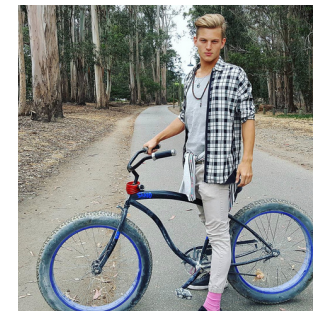
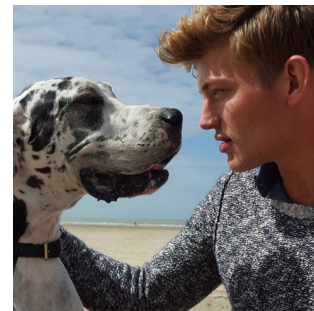
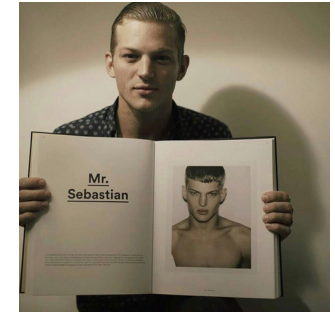
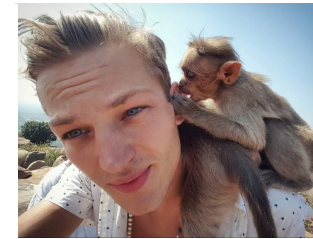
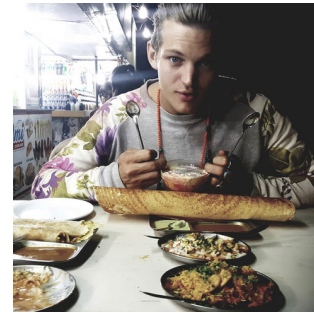
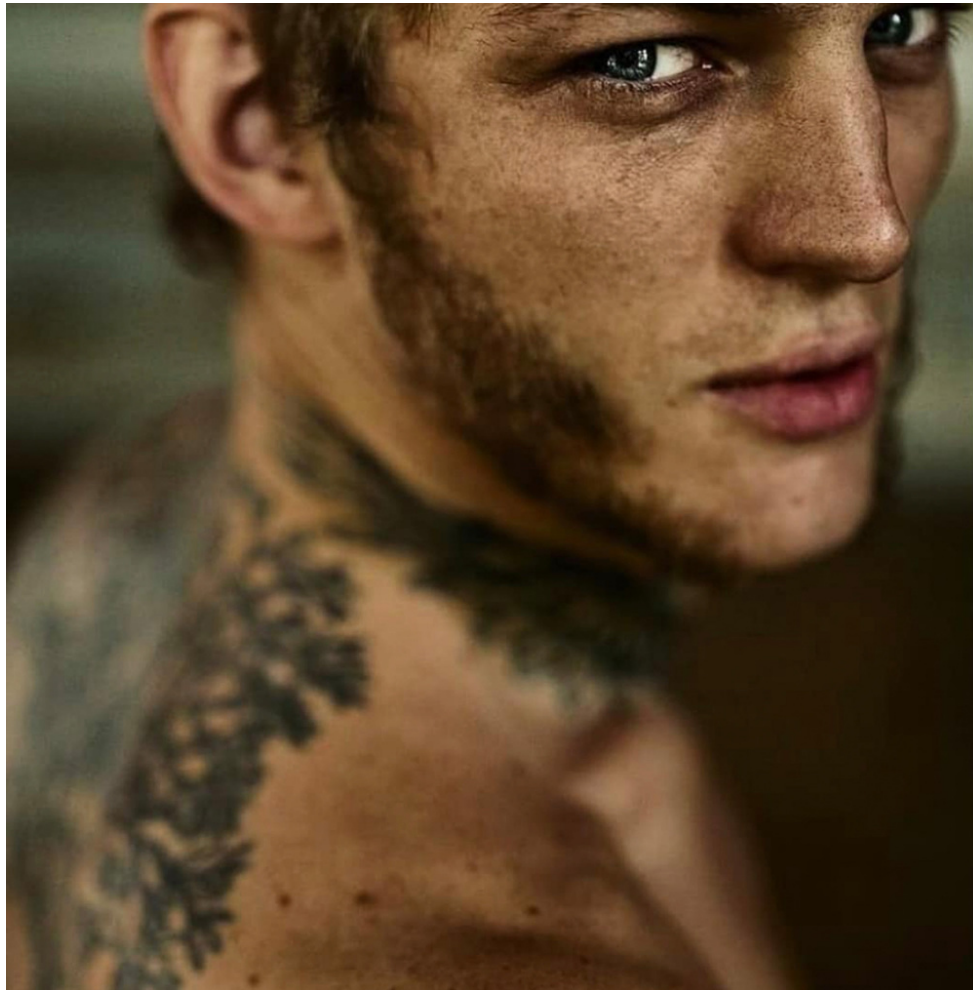
tune models

mail@tune-models.com

tune-models.com

+ 49 171 990 94 32

#tunefamily







## FACTS & EXPERIENCE

AGE 37y.

ORIGIN

CLIENTS

- BENETTON
- CALEO MAGAZINE
- CAROLINA HERRERA
- CLIENT MAGAZINE
- DRYKORN
- FHM COLLECTIONS
- FUCKING YOUNG
- GQ STYLE RUSSIA
- HARPER'S BAZAAR SERBIA MAN
- HYSTERIC GLAMOUR
- JON MAGAZINE
- L'OPTIMUM STYLE
- MAX MAGAZINE
- REFLEX HOMME
- RISBEL MAGAZINE
- RIVER ISLAND
- SICKY MAG

CLIENTS

VICTOR MAGAZINE

PHOTOGRAPHERS

- AITOR SANTOME
- ARNALDO ANAYA LUCCA
- AVA PIVOT
- CHRISTOPH KLUTSCH
- DETLEF SCHNEIDER
- ELLEN VON UNWERTH
- EMMA SUMMERTON
- GIULIO RUSTICHELLI
- GUILHERME COSTA
- HORACIO HAMLET
- JEM MITCHELL
- JOSE MANUEL FERRATER
- JOSEPH WOLFGANG OHLERT
- LEONARDO CORREDOR
- LOUIS DANIEL BOTHA
- QUENTIN JONES
- SEBASTIAN TRONCOSO
- SHXPIR

SHOWS

- GIVENCHY
- FW 12, PARIS
- EMPORIO ARMANI
- FW 13, MILAN

sebastian sauve

tune models

+ 49 171 990 94 32

mail@tune-models.com

tune-models.com

#tunefamily



SHOWS

JEREMY SCOTT  
FW 13, NEW YORK

JEREMY SCOTT  
SS 12, NEW YORK

MICHAEL BASTIAN  
SS 16, OPENED, NEW YORK

STAY TUNED.

sebastian sauve

tune models

mail@tune-models.com

+ 49 171 990 94 32

tune-models.com

#tunefamily