



height	180	bust	78	dress	34/36
hair	blonde	waist	63	bra	a80
eyes	bluegreen	hips	87	shoes	40,5



merle gerhardy

tune models + 49 171 990 94 32
mail@tune-models.com tune-models.com #tunefamily



merle gerhardy



tune models

+ 49 171 990 94 32

mail@tune-models.com

tune-models.com

#tunefamily



merle gerhardy



tune models

+ 49 171 990 94 32

mail@tune-models.com

tune-models.com

#tunefamily



merle gerhardy



tune models

mail@tune-models.com

tune-models.com

+ 49 171 990 94 32

#tunefamily

TM
TUNE MODELS

M
U
N
i
C
H



UNION™



ISSUE N°14

merle gerhardy

tune models

mail@tune-models.com

tune-models.com

+ 49 171 990 94 32

#tunefamily



merle gerhardy



tune models

mail@tune-models.com

+ 49 171 990 94 32

tune-models.com

#tunefamily



merle gerhardy

Die Stilisten

— Hamburg —



tune models

mail@tune-models.com

+ 49 171 990 94 32

tune-models.com

#tunefamily



merle gerhardy



tune models

mail@tune-models.com

+ 49 171 990 94 32

tune-models.com

#tunefamily



merle gerhardy

tune models

mail@tune-models.com

tune-models.com

+ 49 171 990 94 32

#tunefamily



An Kirchplatz in der Altstadt von Garmisch auf Trenauff.
Tattoo: mit Weiss und weißer Palatin-Haar. Fotostudio: Oliver Cichonitz, exklusiv für die „Europa 2“. Make und Öhring: Swarovski

Es ist ein ungewöhnliches Zeichen und ein wahrer Service. Die Kleidungsstücke in der Fashion sind mehr und flügel gibt es wirklich. Die Gesamtheit, die die Brüste schließt, wenn es schwer das Gesicht auf das Bein wachst, ist wenig. Erfahrung, nehme ich an. Denn die Koffer von Konstruktoren erinnern oftmals an die Anstimmung zu jenen Zeiten, als Feriensen noch mit eigenen Schließ- und Schlüsselangeboten wandern, die heute locker zu Trenauff durchgehenden Kassen. Wie mich der „Jungfer“ von 18 oder 2, der hat mehrere angeordnet, aber eben auch vorgelegt. Die gesamte Kleidung für nicht Gelegenheits. Und so möglich passen in zwei Größen. Denn bei allen Trenauff-Angeboten sind überholungsprozesse gibt die Liebe zur Hochsee bekommen durch den Augen. Was wir nicht jeder die willschreiben sie. Man weiß ja, wenn man bei den regelmäßigen Mahlen so tritt. Dieser ist auch immer Dineren. Was man auch nicht die Freiheit zu sein in schließlich gestanden. Schätze aus der Feriengestaltung nicht schenken. Geborgen wird zu Lande und zu Wasser. Wenn Leute gehen, was in der halbjährigen Freizeitspaße hat in. Bitterer dem Papier womöglich nicht Wappend jenseits. In der Welt ist nur kann, dass die Veranstalter von Flug Lloyd sich einiger Zeit nach Maßnahmen im Programm genommen haben. Die haben dann zu Namen wie „Jahresfest“ mit Konventionen im 19. bis 8. Bahnhof und demnach Club und Fashion. Oder die „Jahresfest“ mit Modenschau im Hamburger Hafen.



Fotografie vorwärts im Gym der „MS Europa 2“ mit Musik. Top: weißer Haar, Kettengürtel, Schmuck und Mary Jane Schuhe, alles von Chanel





merle gerhardy



tune models

+ 49 171 990 94 32

mail@tune-models.com

tune-models.com

#tunefamily





merle gerhardy



tune models

+ 49 171 990 94 32

mail@tune-models.com

tune-models.com

#tunefamily



merle gerhardy



tune models

+ 49 171 990 94 32

mail@tune-models.com

tune-models.com

#tunefamily



merle gerhardy



Total look BURBERRY

tune models

mail@tune-models.com

+ 49 171 990 94 32

tune-models.com

#tunefamily

marie
claire **Moda**



© VUITTON

merle gerhardy



tune models

+ 49 171 990 94 32

mail@tune-models.com

tune-models.com

#tunefamily



merle gerhardy



tune models

mail@tune-models.com

tune-models.com

+ 49 171 990 94 32

#tunefamily



merle gerhardy



tune models

+ 49 171 990 94 32

mail@tune-models.com

tune-models.com

#tunefamily



merle gerhardy



tune models

mail@tune-models.com

tune-models.com

+ 49 171 990 94 32

#tunefamily



merle gerhardy



Merle:
Weste MCM
Hemd VERSACE
Hose GANNI
Schuhe & Handtasche BOTTEGA VENETA
Handschuhe LAURA GERTE

tune models

mail@tune-models.com

+ 49 171 990 94 32

tune-models.com

#tunefamily



merle gerhardy



STRAIGHT SHORN

Bob jadi salah satu potongan rambut paling favorit untuk membuat pernyataan gaya. Tampil lebih segar dengan sentuhan asimetris legas, biarkan rambut bagian belakang terlihat lebih pendek dari bagian depan. Sesekali cobalah untuk memaksimalkan penggunaan alat catok dari akar hingga ujung rambut untuk tampilan kuat dan dinamis.

ELLE JUNI/JULI 2012 83

tune models

mail@tune-models.com

+ 49 171 990 94 32

tune-models.com

#tunefamily



merle gerhardy

tune models

mail@tune-models.com

tune-models.com

+ 49 171 990 94 32

#tunefamily



merle gerhardy



GO ALL OUT
 Sebagai pamungkas, padankan tren rambut sleek dengan eyeliner hitam yang tegas. Untuk eyeliner, gunakan tekstur gel dan aplikator yang memudahkan Anda dalam menggambar, misalnya kuas dengan ujung runcing. Agar hasil akhir tetap anggun, hindari penggunaan lipstik berwarna menyala atau blush on yang terlalu terang. Bentuk rambut secara sempurna dengan penggunaan gel bertekstur ringan. Terakhir, semprotkan parfum dengan jarak 10 cm di atas kepala.

© ILLUMI/SHUTTERSTOCK 85

tune models

+ 49 171 990 94 32

mail@tune-models.com

tune-models.com

#tunefamily



merle gerhardy

tune models

mail@tune-models.com

tune-models.com

+ 49 171 990 94 32

#tunefamily



merle gerhardy



tune models

mail@tune-models.com

tune-models.com

+ 49 171 990 94 32

#tunefamily



merle gerhardy



tune models

mail@tune-models.com

tune-models.com

+ 49 171 990 94 32

#tunefamily

"L'AMOUR NAISSANT" Sebastien Tellier



merle gerhardy



tune models

mail@tune-models.com

+ 49 171 990 94 32

tune-models.com

#tunefamily



merle gerhardy



tune models

mail@tune-models.com

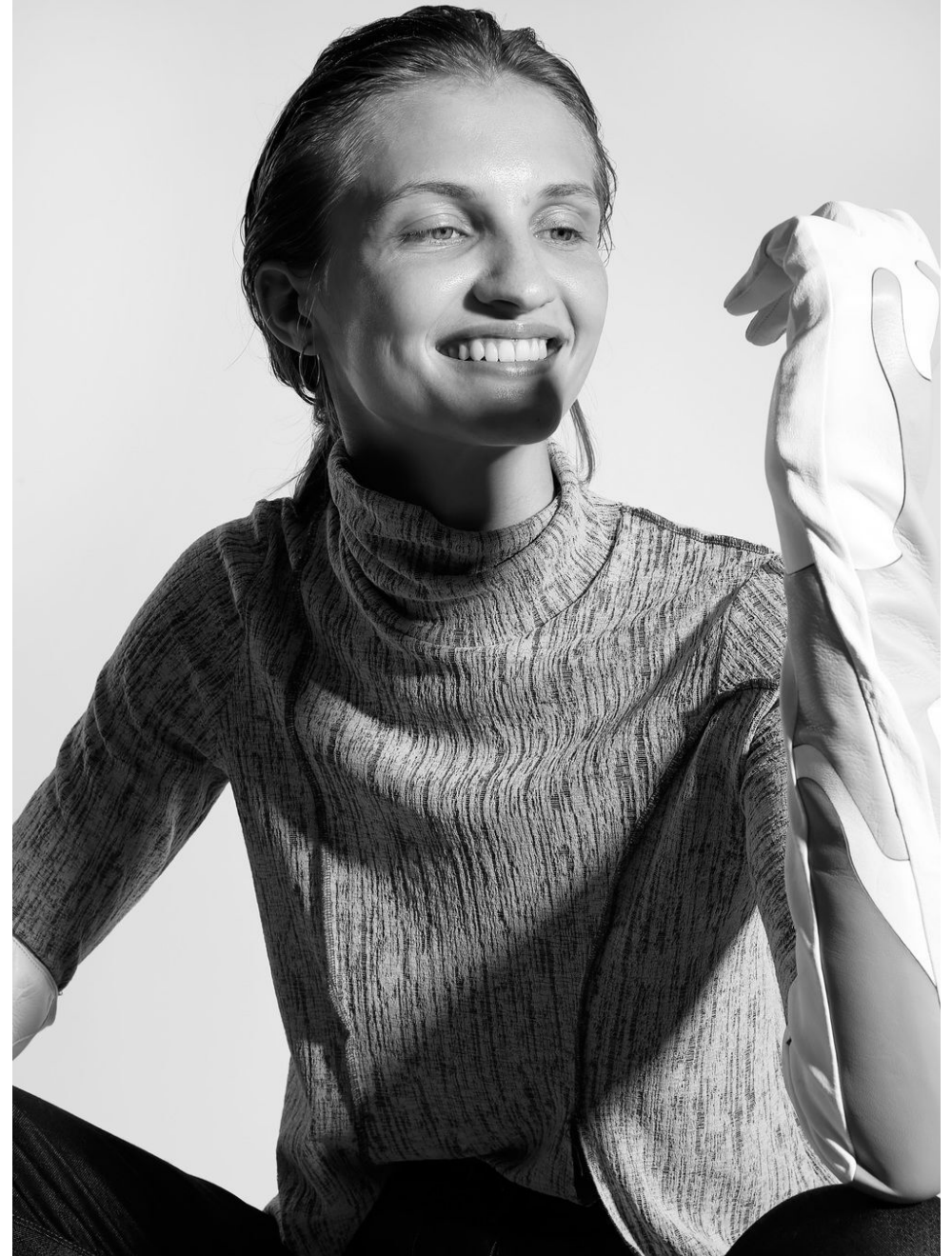
tune-models.com

+ 49 171 990 94 32

#tunefamily



merle gerhardy



tune models

mail@tune-models.com

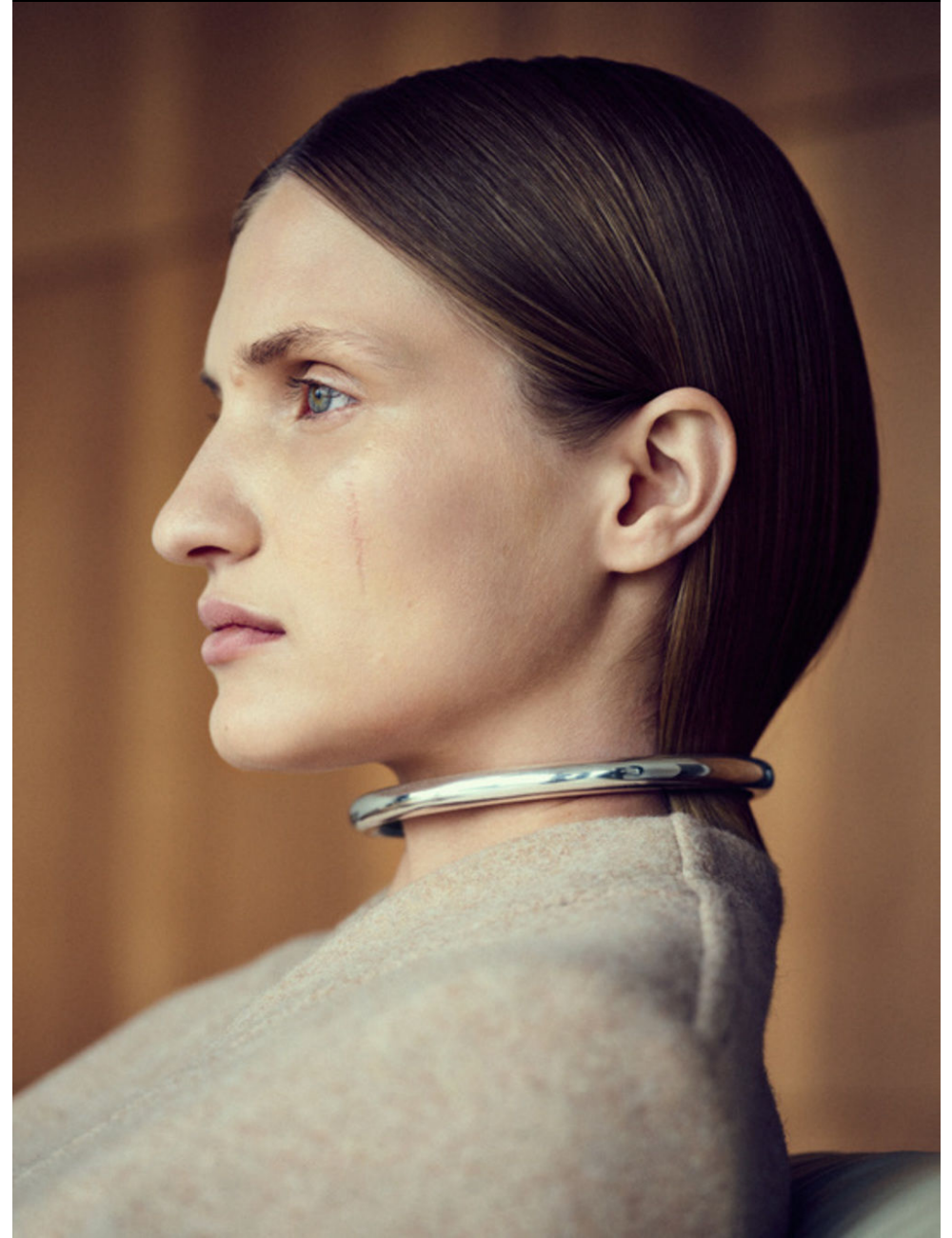
tune-models.com

+ 49 171 990 94 32

#tunefamily



merle gerhardy



tune models

mail@tune-models.com

+ 49 171 990 94 32

tune-models.com

#tunefamily



merle gerhardy



tune models

mail@tune-models.com

+ 49 171 990 94 32

tune-models.com

#tunefamily



merle gerhardy



tune models

mail@tune-models.com

+ 49 171 990 94 32

tune-models.com

#tunefamily

TM
tune MODELS



merle gerhardy

tune models

mail@tune-models.com

tune-models.com

+ 49 171 990 94 32

#tunefamily



Top by DE LA VALI and trousers by NANUSHKA. Hair Evve Roux at Carol Hayes Management using EVO HAIR. Makeup by Sam Sunshine using BARE MINERALS COMPLEXION RESCUE & RMS MAGIC LUMINOUS. Photography Assistants: Danny Walker, Colum Inskip and Nico Van Loggenberg. Fashion Assistants: Phoebe Schunngs and Sandra Bláček. Model: Merle Gerhardy at Premier Model Management. Production by Iris Ortas & Gavin Schneider Productions.



merle gerhardy



desert rose

The maxim of the new resort collections? Excess all areas, as billowing gowns, dazzling lamé and swirling prints take a trip back to the Marrakech of Yves Saint Laurent and Loulou de la Falaise

Photographed by Louie Banks
Styled by Sophie Pera

HAIR: EVVE ROUX / CAROL HAYES MANAGEMENT
MAKEUP: SAM SUNSHINE / BARE MINERALS
STYLING: SOPHIE PERA
PHOTOGRAPHY: LOUIE BANKS
PRODUCTION: IRIS ORTAS & GAVIN SCHNEIDER PRODUCTIONS

tune models

+ 49 171 990 94 32

mail@tune-models.com

tune-models.com

#tunefamily



merle gerhardy



tune models

mail@tune-models.com

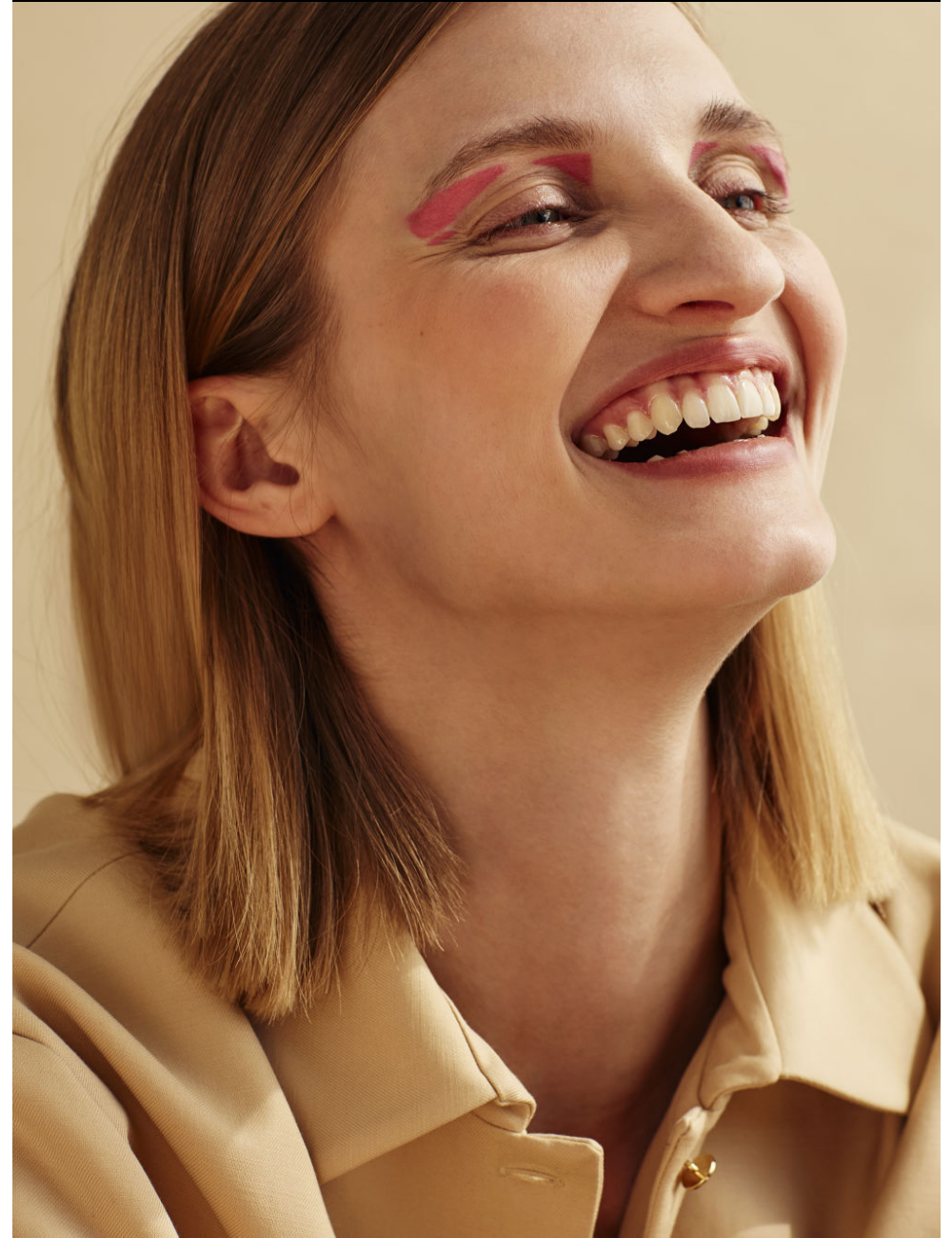
+ 49 171 990 94 32

tune-models.com

#tunefamily



merle gerhardy



tune models

+ 49 171 990 94 32

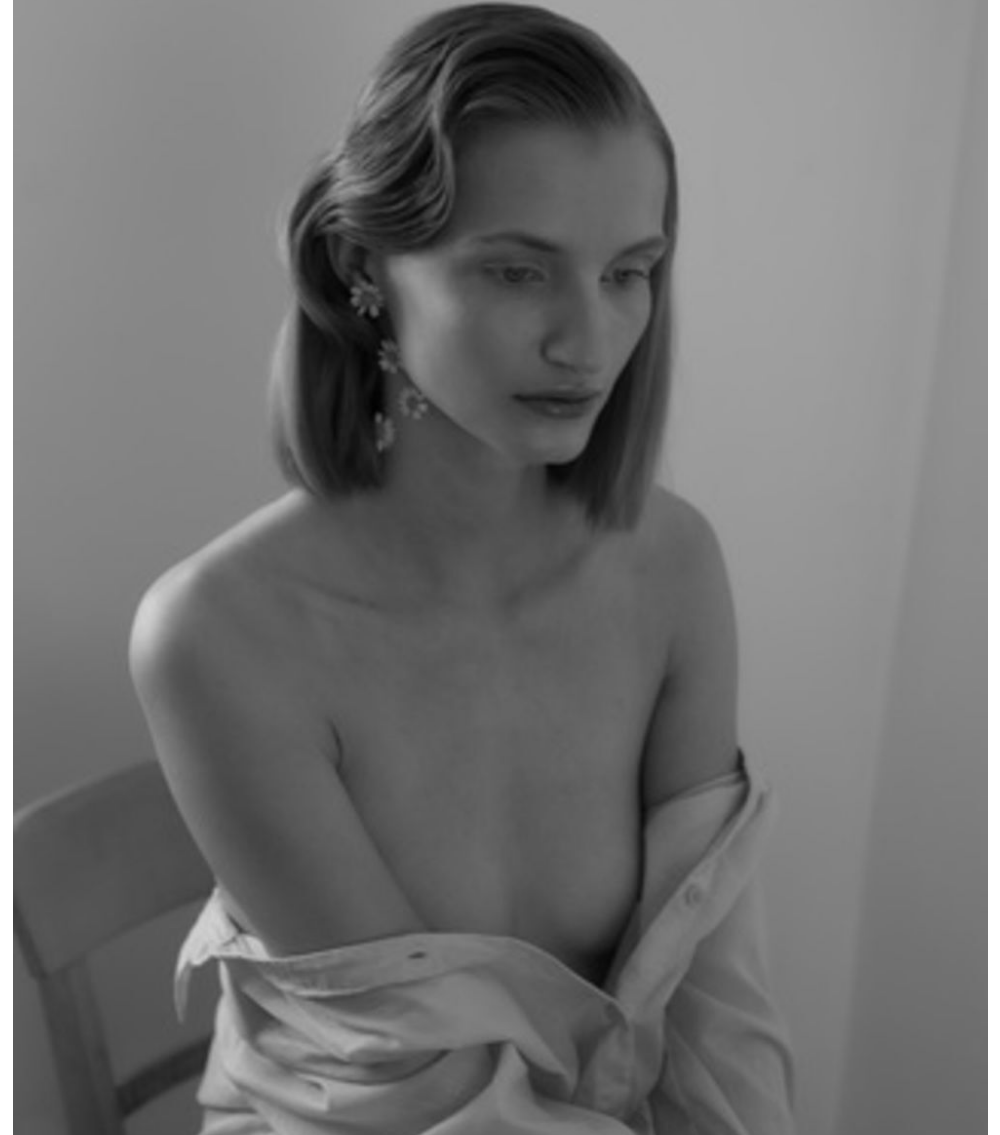
mail@tune-models.com

tune-models.com

#tunefamily



merle gerhardy



tune models

+ 49 171 990 94 32

mail@tune-models.com

tune-models.com

#tunefamily



merle gerhardy



tune models

mail@tune-models.com

tune-models.com

+ 49 171 990 94 32

#tunefamily



merle gerhardy



tune models

mail@tune-models.com

tune-models.com

+ 49 171 990 94 32

#tunefamily



merle gerhardy



*Love Me Like
There's No Tomorrow*

tune models

+ 49 171 990 94 32

mail@tune-models.com

tune-models.com

#tunefamily



merle gerhardy



Styling: MERLE GERHARDY, HAIR: PIPPA SMALL, MAKEUP: PIPPA SMALL, DRESS: GIVENCHY, SHOES: GIVENCHY, STYLING: MERLE GERHARDY, HAIR: PIPPA SMALL, MAKEUP: PIPPA SMALL

tune models

mail@tune-models.com

tune-models.com

+ 49 171 990 94 32

#tunefamily



merle gerhardy



tune models

+ 49 171 990 94 32

mail@tune-models.com

tune-models.com

#tunefamily



merle gerhardy



tune models

mail@tune-models.com

tune-models.com

+ 49 171 990 94 32

#tunefamily



merle gerhardy



tune models

+ 49 171 990 94 32

mail@tune-models.com

tune-models.com

#tunefamily



merle gerhardy



tune models

mail@tune-models.com

+ 49 171 990 94 32

tune-models.com

#tunefamily



merle gerhardy



Velvet, crystal and sequin cape, £22,280; velvet and sequin dress, £7,930, both by **GUCCI**. Gold, metal and clear-glass necklace, £240, by **PEBBLE LONDON**.
For stockists, see Address Book. Hair: Oskar Pera. Make-up: Terry Barber using MAC Cosmetics at David Artists. Model: Merle Gerhardy at Premier Models.
Production: Poppy Evans. Photographer's Assistant: Emmanuel O'Brien. Fashion Assistant: Lydie Harrison. Shot on location at La Mamounia, Marrakech.

tune models

mail@tune-models.com

+ 49 171 990 94 32

tune-models.com

#tunefamily



merle gerhardy

tune models

mail@tune-models.com

tune-models.com

+ 49 171 990 94 32

#tunefamily



merle gerhardy

tune models

mail@tune-models.com

tune-models.com

+ 49 171 990 94 32

#tunefamily



merle gerhardy



tune models

+ 49 171 990 94 32

mail@tune-models.com

tune-models.com

#tunefamily



merle gerhardy



tune models

mail@tune-models.com

tune-models.com

+ 49 171 990 94 32

#tunefamily



merle gerhardy



tune models

mail@tune-models.com

+ 49 171 990 94 32

tune-models.com

#tunefamily



merle gerhardy



tune models

mail@tune-models.com

tune-models.com

+ 49 171 990 94 32

#tunefamily



merle gerhardy



tune models

mail@tune-models.com

tune-models.com

+ 49 171 990 94 32

#tunefamily



merle gerhardy



tune models

mail@tune-models.com

tune-models.com

+ 49 171 990 94 32

#tunefamily



merle gerhardy



tune models

mail@tune-models.com

tune-models.com

+ 49 171 990 94 32

#tunefamily



merle gerhardy



tune models

mail@tune-models.com

tune-models.com

+ 49 171 990 94 32

#tunefamily



merle gerhardy



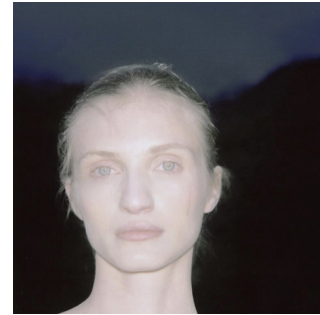
tune models

mail@tune-models.com

+ 49 171 990 94 32

tune-models.com

#tunefamily





FACTS & EXPERIENCE

NUTRITION	ALL KINDS OF FOOD, NO CHEESE, MILK & BUTTER
TALENTS	DRAWING
SPORTS	CROSS FIT, MARTIAL ARTS, AEROBIC
AGE	29y.
ORIGIN	DEUTSCHLAND
CLIENTS	ACHTUNG MAGAZINE ACHTUNG MODE ACHTUNG MODE MAGAZINE ANTIDOTE MAGAZINE BLANC MAGAZINE BOLERO MAGAZINE DIE STILISTEN MAGAZIN DOUBLE MAGAZINE ELLE HONG KONG ELLE INDONESIA

CLIENTS

ELLE SERBIA
ELLE TURKIYE
FACES MAGAZINE
GLASS MAGAZINE
HAPAG LLOYD
INTERVIEW GERMANY
L'OFFICIEL LETTLAND

MARIE CLAIRE TURKEY
PRINGLE OF SCOTLAND
ROLLACOASTER MAGAZINE

SASKIA DIEZ
SCHIAPARELLI
SSENSE
TATLER MAGAZINE
THE IMPRESSION MAGAZINE
TUSH MAGAZINE
TWIN MAGAZINE
UNION MAGAZINE
UP -THE MAGAZINE
VAGABOND
VOGUE PORTUGAL
VOGUE UKRAINE
WOMAN MAGAZINE
ZALANDO

merle gerhardy

tune models

mail@tune-models.com

+ 49 171 990 94 32

tune-models.com

#tunefamily



DI DIO

OLIVER RAUH

OMER FARAJ

PER FLORIAN APPELGREN

PETRISSOPH KLUTSCH

RAMONACORBATER

ARYEMFRAMONTENKO

ROYALGILBERT

SARIBURENKIASKAN

SHERSTOMILEKLUTSCH

STAEADMEGRASSAMMER

THOMASOGGISOBLUM

ESONZASTMAEKER

FERBYNORGDARDNAT

FRANSENSTEIN STUDIO

VITALI GELWICH

HELENE SANDBERG

BALENCIAGA

HUGO BOSS

FW 18, 1ST SHOW, PARIS

JULIA VON DER HEIDE

ACNE STUDIOS

KATHRIN MAKOWSKI

FW 20, PARIS

KORAY PARLAK

BOGNER

FW 25, MUNICH, GERMANY

EDUKART PHOTOGRAPHY

EDDON CHOI

ROUZE BANKS LONDON

MARTINA FERRARA

MASHA MEL

PHOTOGRAPHERS

SHOWS

PHOTOGRAPHERS

MAX VON TREU

merle gerhardy

tune models

+ 49 171 990 94 32

mail@tune-models.com

tune-models.com

#tunefamily



SHOWS

JUNYA WATANABE

SS 20, PARIS

UNRAVEL

SS 20, PARIS

MOTHER AGENCY

TUNE MODEL MGMT

AGENCY'S WORLDWIDE

PREMIER LONDON, LONDON

LE MANAGEMENT, COPENHAGEN

LE MANAGEMENT, STOCKHOLM

LE MANAGEMENT, HAMBURG

TANK AGENCY, MILAN

STAY TUNED.

merle gerhardy

tune models

+ 49 171 990 94 32

mail@tune-models.com

tune-models.com

#tunefamily