

height	187	chest	93,5	dress	46/48
hair	brown	waist	79	collar	40,5
eyes	brown	hips	89	shoes	43,5



florian uerschels



tune models

+ 49 171 990 94 32

mail@tune-models.com

tune-models.com

#tunefamily

TM
tune MODELS



florian uerschels

tune models

mail@tune-models.com

tune-models.com

+ 49 171 990 94 32

#tunefamily



florian uerschels



tune models

+ 49 171 990 94 32

mail@tune-models.com

tune-models.com

#tunefamily



florian uerschels



MODA ESTILO
Foto: Camera on 18 & Carpa in agosto, Studio Tiger of Sweden, M&S in agosto, Wood&K, Studio in otto, Florio Van Rommel, Croux in agosto, Falke, in agosto, M&S in agosto, Van, Carpa in agosto, Van Laack & Flo, Camera on 18, Kibon, Carpa in agosto, North Side, Studio in otto, Christoph&Deborah, Camera on 18, Looka by Wolfgang Joop
MUSICHE: FURBER UNICHELL & TUNE MODELS, THE SERVICE OF MUSIC & SOUNDING, UNIVERSAL MUSIC, DI FRANZ BRONCO, ASSISTENTE DI PRODUZIONE: VITO PETERLIN, ASSISTENTE DI STYLING: CARMEN GROSSO
EDITORIAL: REALIZZATO DA EXCLUSIVO PIRELLA & SOCI SPA

tune models

mail@tune-models.com

+ 49 171 990 94 32

tune-models.com

#tunefamily



florian uerschels



tune models

mail@tune-models.com

+ 49 171 990 94 32

tune-models.com

#tunefamily



florian uerschels





florian uerschels



tune models

mail@tune-models.com

tune-models.com

+ 49 171 990 94 32

#tunefamily



florian uerschels



TM
TUNE MODELS



florian uerschels



tune models

mail@tune-models.com

tune-models.com

+ 49 171 990 94 32

#tunefamily



florian uerschels



tune models

mail@tune-models.com

tune-models.com

+ 49 171 990 94 32

#tunefamily

From our point of view on Earth, it appears to move slowly in the sky,
taking months to move from one constellation to another.



florian uerschels



tune models

mail@tune-models.com

+ 49 171 990 94 32

tune-models.com

#tunefamily



INSPIRENT VON: COACH BLUE EAU DE TOILETTE DORSCH
ANZUS KARL LAGERFELD, PALLOVER SANDRO PARIS, HANDSCHUHE ROCCO.

florian uerschels



tune models

mail@tune-models.com

tune-models.com

+ 49 171 990 94 32

#tunefamily

GMAROMagazine



florian uerschels



FLORIAN WEARS
 MAISON MARGIELA ASYMMETRIC
 TORN WOOL BLAZER
 PRICE TO BE CONFIRMED (MAISON MARGIELA)
 HED MEYNER MULTI LAYERED
 PATCHWORK SHIRT \$5,600 (JOYCE)
 YOHJI YAMAMOTO TROUSERS WITH
 KILT IN LINEN \$6,900 (JOYCE)
 CODY SANDERSON RED LEATHER
 BOLO TIE WITH STAR MOTIF \$17,000 (JOYCE)
 "DIOR ARTY" BERET IN
 KHAKI RABBIT FELT \$6,900
 "ZODIADDICT" TAURUS SIGN NECKLACE IN METAL
 WITH GOLD TONE FINISH \$14,000
 (ALL FROM DIOR)
 SOCKS: STYLIST OWN

tune models

+ 49 171 990 94 32

mail@tune-models.com

tune-models.com

#tunefamily



MODA ESTILO

Modelo principal de inspiração para a série: **Pho**. Criação em **St. Barts**. Criação em Paris.
Looks By **Wolfgang Joop**, **Tim**, **Carsten** em **algodão**, **Helmut Lang** no **Braun Hamburg**. Os sapatos são **boots**,
de **camurça** para o **Pho**. **Carsten** em **algodão**, **St. Barts**. Criação em Paris. **Wolfgang Joop**, **Tim**, **Carsten** em **algodão**, **Helmut Lang** no **Braun Hamburg**.
Luzes em algodão e **boots** em **camurça**. **By Yoon** em **Yoon** com **Veludo** em **algodão**. **Fabrizio**.

CHAPTER_K

#254

LEFT
PINE JACQUARD JACKET RMB12,999
TURTLE NECK SWEATER RMB4,099
CHECK KNIT SWEATER RMB4,099
CORDUROY PANTS RMB4,099

RIGHT
TRACK JACKET RMB4,799
STRIPED KNIT SWEATER RMB6,399
HALF ZIP SWEATSHIRT RMB4,199
STRIPED PANTS RMB5,699

KENZO
北京东单区建国路7号 北京SKP 2层
(010) 6530 5888



K
FOR
KENZO
2018 LA COLLECTION MEMENTO N°3
(THE DREAM)

KENZO创始人高田贤三，1960年代末期23岁赴巴黎，担任知名时尚设计师伊夫·圣罗兰的助理开启了职业生涯，半年后KENZO为时，高田贤三「AUGOLE JAP」，并逐渐中充满了文化气息。1970年，以其设计独特性所以以KENZO命名，这是高田贤三对其高田HENRI ROUSSEAU的致敬之作。

(MEMENTO N°3) 是KENZO创始人设计CAROL LIM/HUMBERTO LEON在2011年入主后，所打造向高田贤三致敬的专属系列，并将高田贤三的经典元素品牌，系列第三季，以其创始人本人最爱的画家HENRI ROUSSEAU的經典作品《THE DREAM》为灵感，将第一系列的精神继续发扬。



YOHJI YAMAMOTO

florian uerschels



tune models

mail@tune-models.com

tune-models.com

+ 49 171 990 94 32

#tunefamily



florian uerschels

tune models

mail@tune-models.com

+ 49 171 990 94 32

tune-models.com

#tunefamily



florian uerschels



tune models

+ 49 171 990 94 32

mail@tune-models.com

tune-models.com

#tunefamily



florian uerschels



tune models

mail@tune-models.com

tune-models.com

+ 49 171 990 94 32

#tunefamily



florian uerschels



tune models

mail@tune-models.com

tune-models.com

+ 49 171 990 94 32

#tunefamily



florian uerschels

tune models

+ 49 171 990 94 32

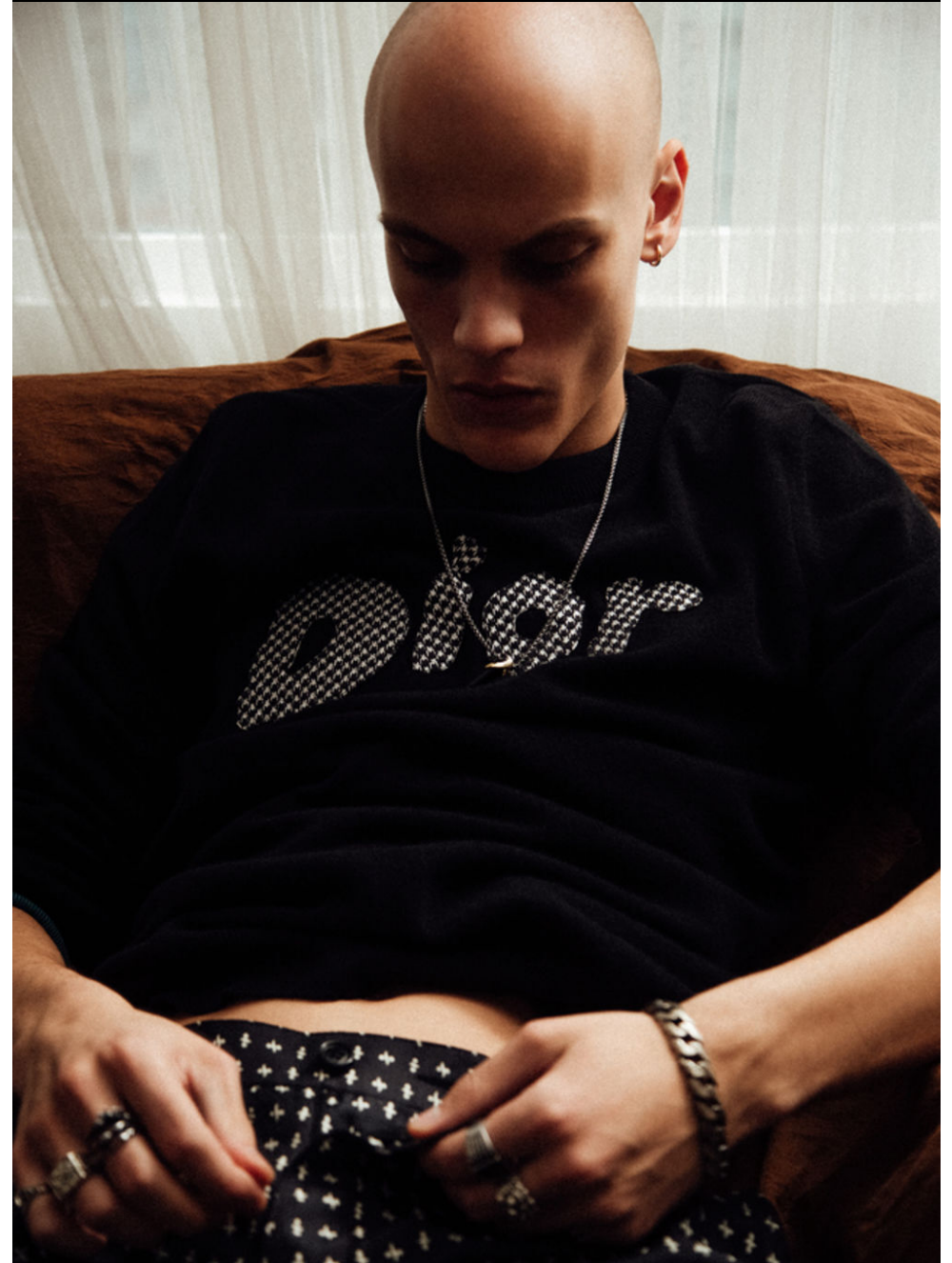
mail@tune-models.com

tune-models.com

#tunefamily



florian uerschels



tune models

+ 49 171 990 94 32

mail@tune-models.com

tune-models.com

#tunefamily

VULKAN



florian uerschels



tune models

mail@tune-models.com

+ 49 171 990 94 32

tune-models.com

#tunefamily



florian uerschels



tune models

mail@tune-models.com

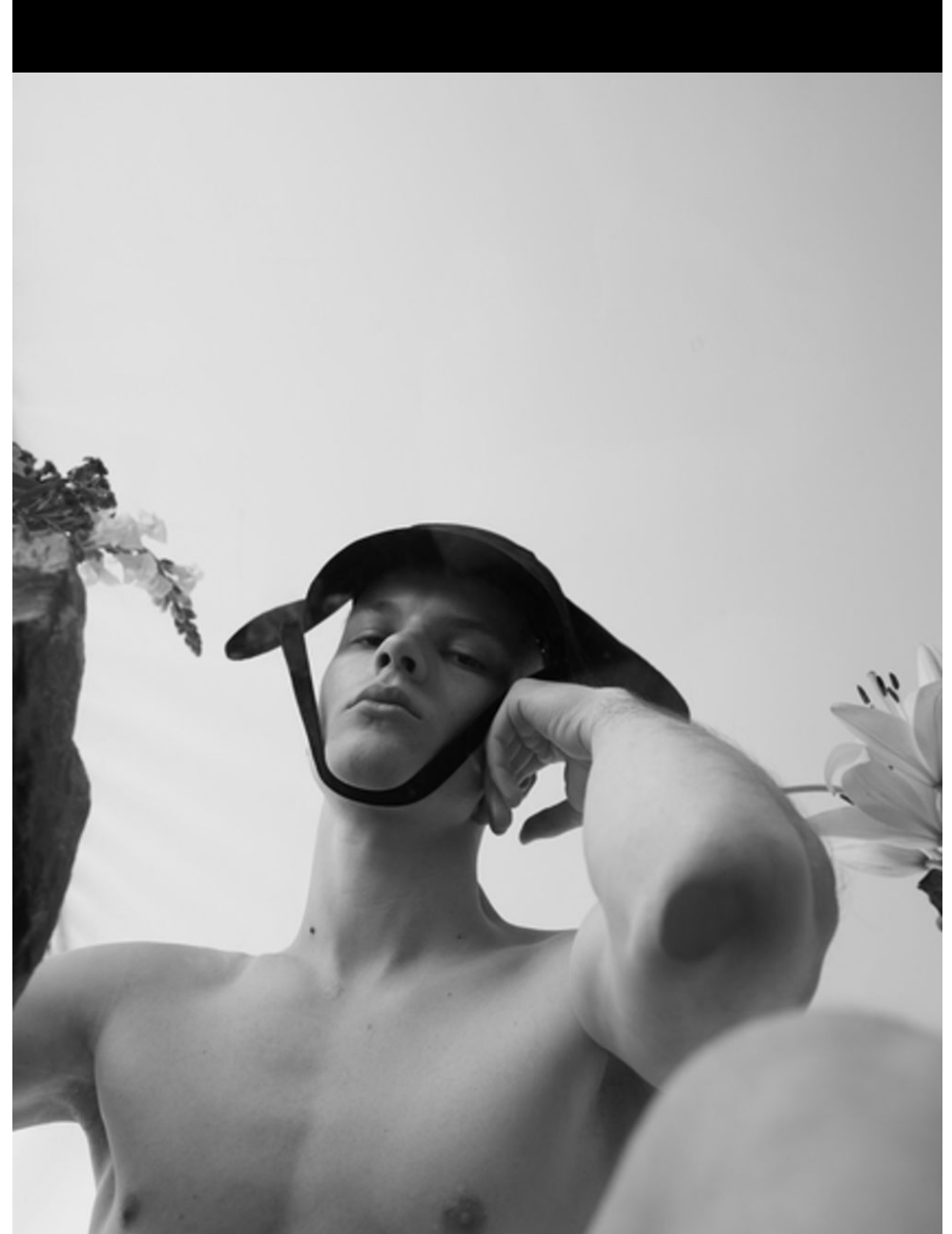
tune-models.com

+ 49 171 990 94 32

#tunefamily



florian uerschels



tune models

+ 49 171 990 94 32

mail@tune-models.com

tune-models.com

#tunefamily



florian uerschels



tune models

+ 49 171 990 94 32

mail@tune-models.com

tune-models.com

#tunefamily



florian uerschels



tune models

mail@tune-models.com

tune-models.com

+ 49 171 990 94 32

#tunefamily



florian uerschels



tune models

+ 49 171 990 94 32

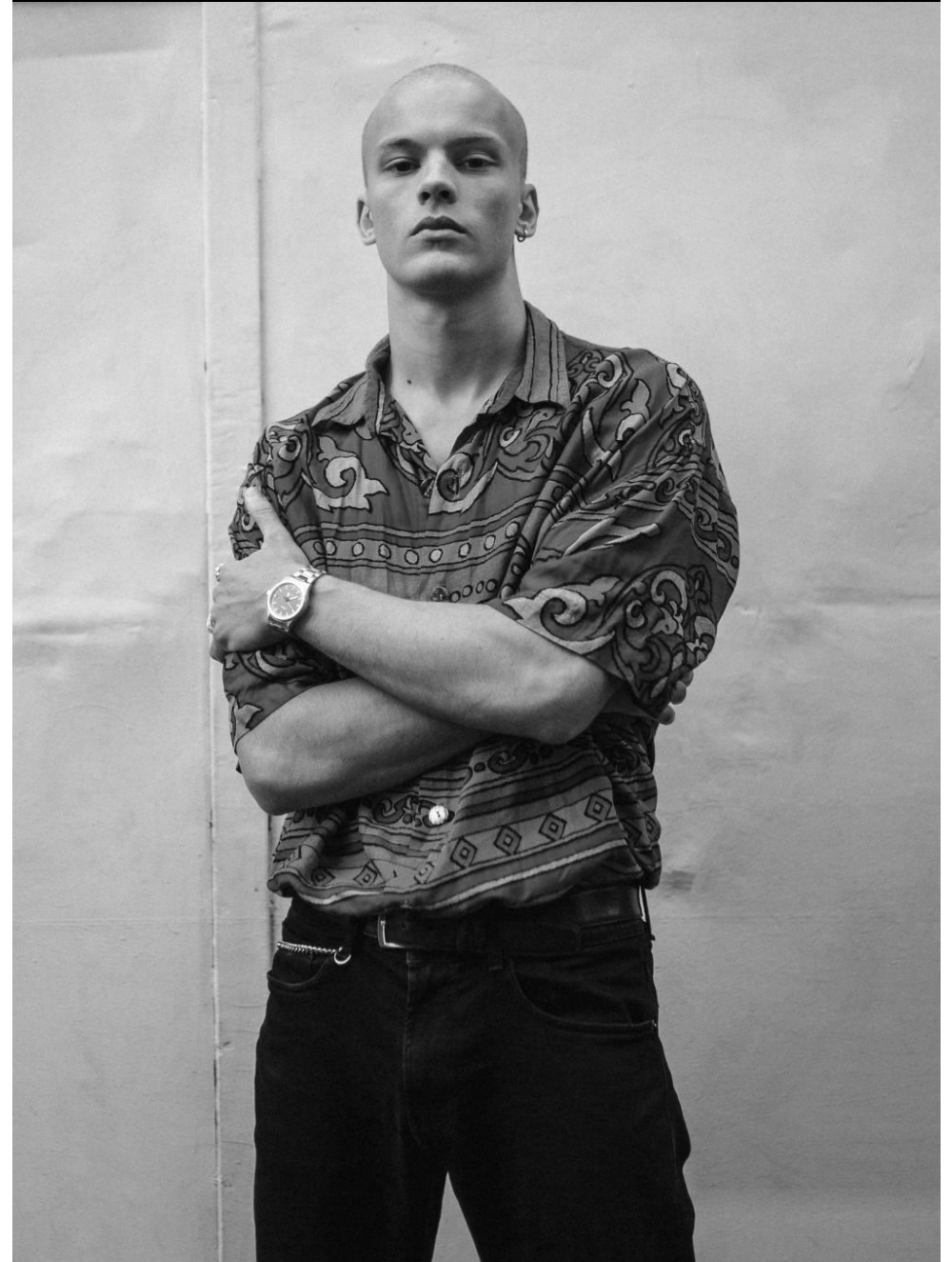
mail@tune-models.com

tune-models.com

#tunefamily



florian uerschels



tune models

mail@tune-models.com

tune-models.com

+ 49 171 990 94 32

#tunefamily



florian uerschels



tune models

mail@tune-models.com

tune-models.com

+ 49 171 990 94 32

#tunefamily



PLANET X' s moons are sometimes called the Jovian satellites, the largest of these are Ganymede, Callisto Io and Europa. Ganymede measures 5,268 km across, making it larger than the planet Mercury.

florian uerschels



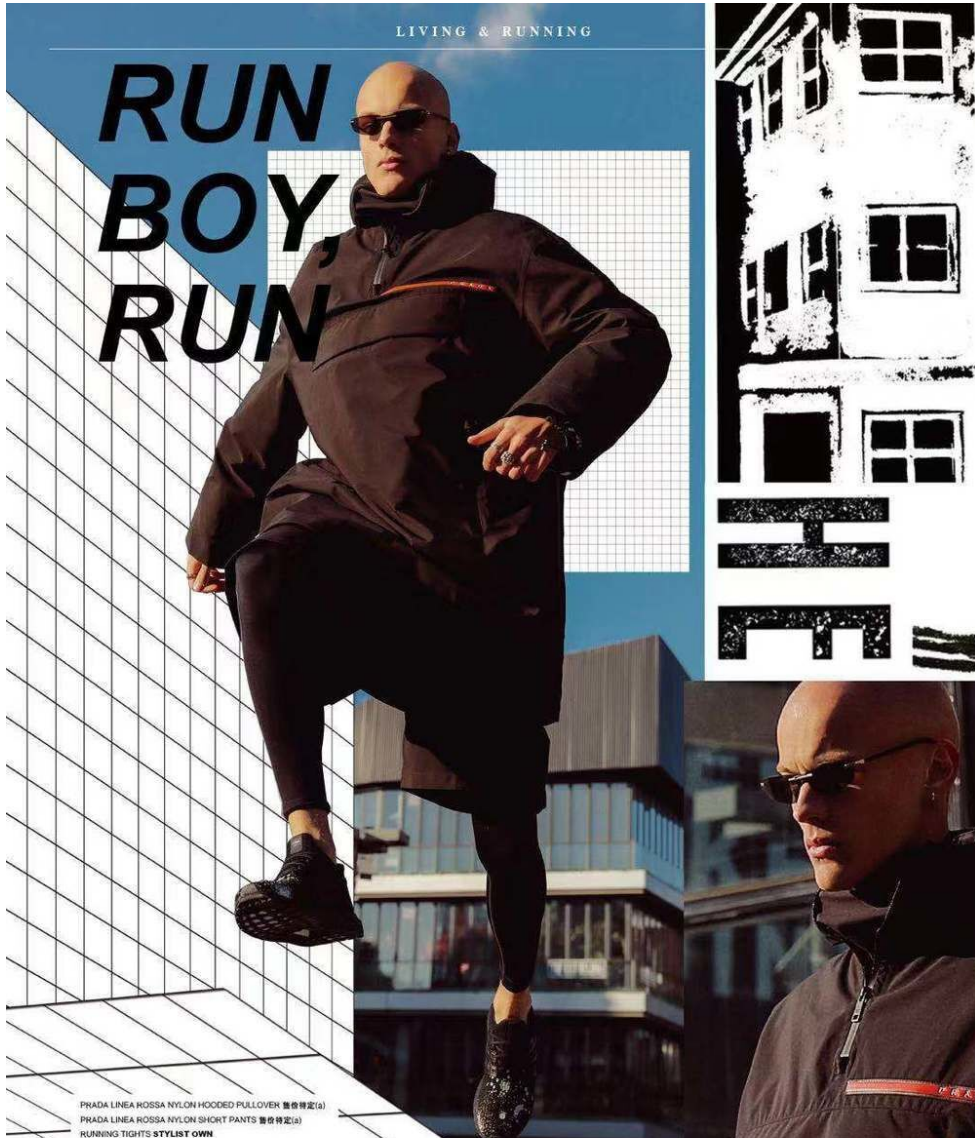
tune models

+ 49 171 990 94 32

mail@tune-models.com

tune-models.com

#tunefamily



florian uerschels



tune models

+ 49 171 990 94 32

mail@tune-models.com

tune-models.com

#tunefamily



florian uerschels



tune models

mail@tune-models.com

tune-models.com

+ 49 171 990 94 32

#tunefamily

LIVING & RUNNING



**RUNNING
AWAY
FROM
CHAOS**

BEANIE STYLIST OWN
 AMBUSH NYLON TURTLENECK PULLOVER RMB8,299 (c)
 MONCLER REVERSIBLE DOWN VEST 蒙球鸭绒(定)(d)
 96% IS ZIPPER DETAILED PANTS RMB5,499 (e)
 HOKA ONE ONE SPEEDGOAT 2 RMB1,189 (f)

(a) PRADA 北京市朝阳区建国路87号北京SKP A区1层M1017号 (010)65307628
 (b) ADIDAS 北京市朝阳区三里屯南街19号11楼 (010) 6474 2233
 (c) ASICS 上海市淮海中路909号 (001)9466 9672
 (d) DOVER STREET MARKET BEIJING 北京市朝阳区三里屯路14号大望京北区1层 (010) 6416 4697
 (e) MONCLER 北京市朝阳区三里屯路19号三里屯太古里北区1层 (010) 6477 9071
 (f) HOKA ONE ONE 官方旗舰店

florian uerschels



tune models

+ 49 171 990 94 32

mail@tune-models.com

tune-models.com

#tunefamily



florian uerschels



tune models

mail@tune-models.com

tune-models.com

+ 49 171 990 94 32

#tunefamily



florian uerschels



tune models

mail@tune-models.com

tune-models.com

+ 49 171 990 94 32

#tunefamily



florian uerschels



tune models

mail@tune-models.com

tune-models.com

+ 49 171 990 94 32

#tunefamily



KALEOS
Kowalski

florian uerschels



Below PLANET X, massive atmosphere (which is made primarily of hydrogen), there are layers of compressed hydrogen gas, liquid metallic hydrogen, and a core of ice, rock, and metals.

tune models

mail@tune-models.com

+ 49 171 990 94 32

tune-models.com

#tunefamily



florian uerschels



PLANET X' s atmosphere is special because it

tune models

mail@tune-models.com

tune-models.com

+ 49 171 990 94 32

#tunefamily



florian uerschels

tune models

mail@tune-models.com

tune-models.com

+ 49 171 990 94 32

#tunefamily



MARC O'POLO
»506140«
-
headband NIKE
turtleneck JILL SANDER
nosering & necklace KTZ

florian uerschels



The upper atmosphere of PALNET X is divided into cloud belts and zones. They are made primarily of ammonia crystals, sulfur, and mixtures of the two compounds.

tune models

mail@tune-models.com

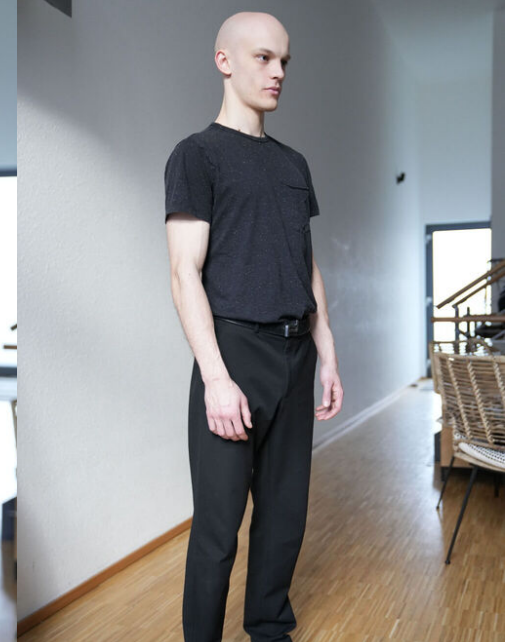
+ 49 171 990 94 32

tune-models.com

#tunefamily



florian uerschels



tune models

mail@tune-models.com

tune-models.com

+ 49 171 990 94 32

#tunefamily



florian uerschels



tune models

mail@tune-models.com

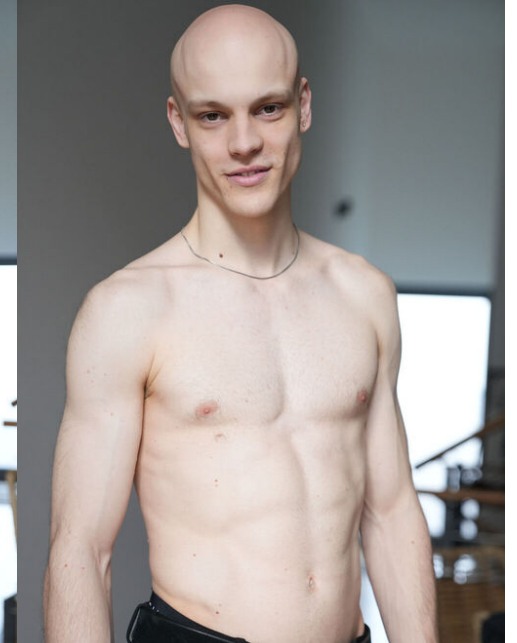
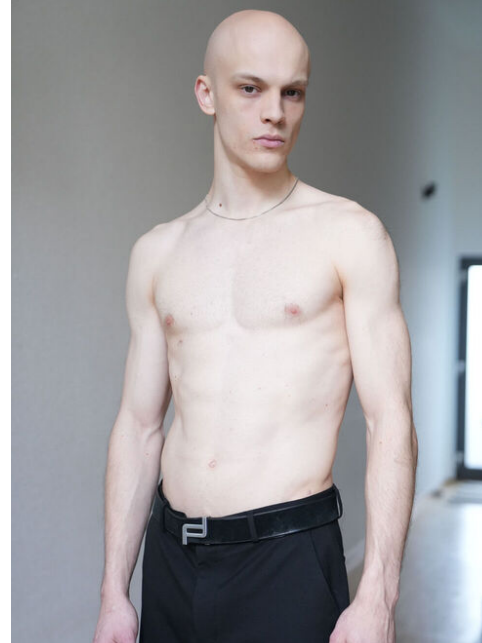
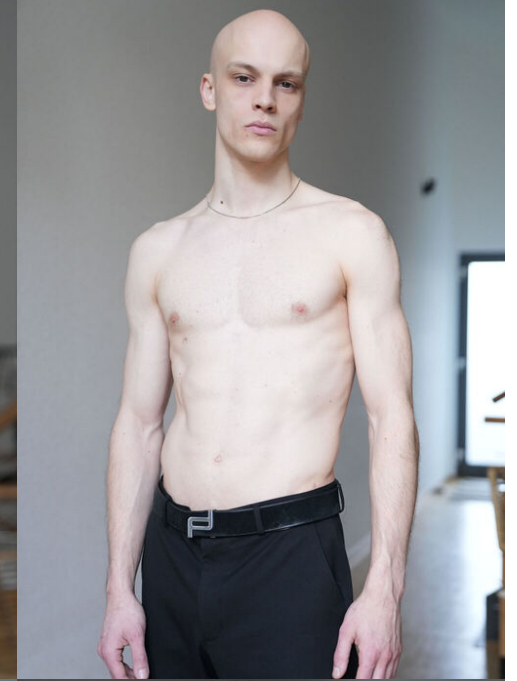
tune-models.com

+ 49 171 990 94 32

#tunefamily



florian uerschels



tune models

mail@tune-models.com

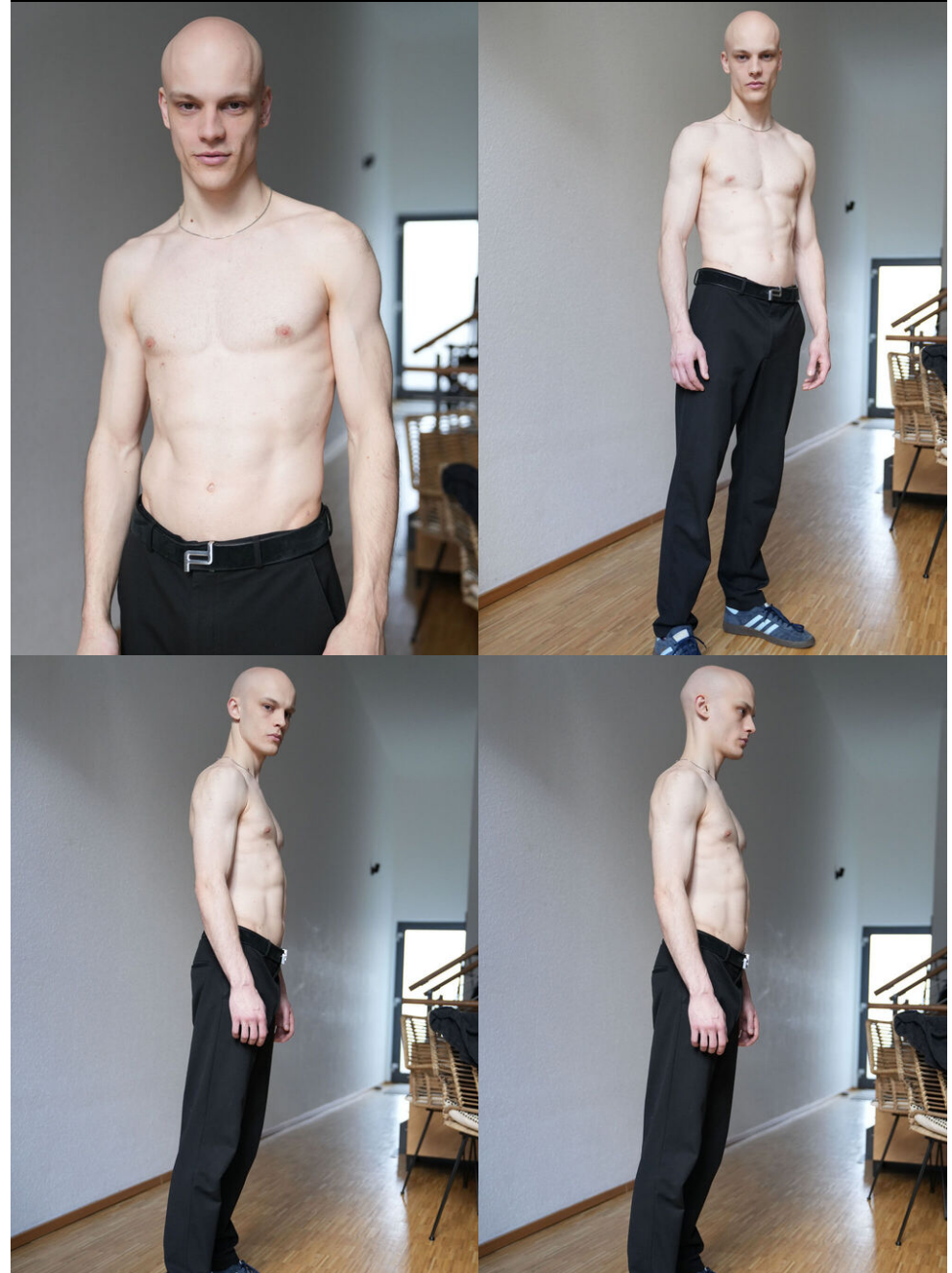
tune-models.com

+ 49 171 990 94 32

#tunefamily



florian uerschels



tune models

mail@tune-models.com

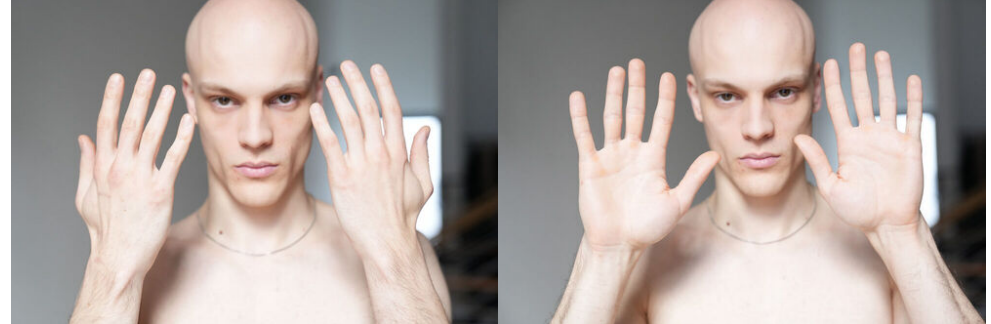
tune-models.com

+ 49 171 990 94 32

#tunefamily



florian uerschels



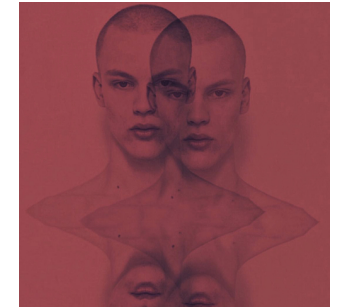
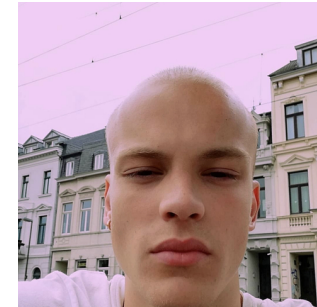
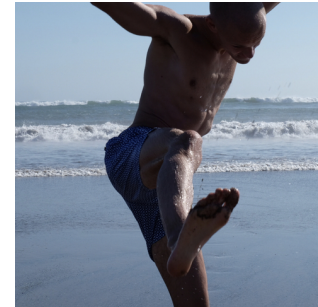
tune models

mail@tune-models.com

tune-models.com

+ 49 171 990 94 32

#tunefamily





FACTS & EXPERIENCE

PRONOUN	HE
NUTRITION	ALL KINDS OF FOOD
TALENTS	DJING, OVER ALL SPORTY
SPORTS	FITNESS, ATHLETICS, SWIMMING, SKATEBOARDING, BASKETBALL
AGE	27y.
ORIGIN	DEUTSCH
CLIENTS	BEHIND THE BLINDS CONTRIBUTOR MAGAZINE DAZZLING CLUB GMARO MAGAZINE GQ PORTUGAL HIDE M MINDLYJOURNAL SERGIO TACCHINI SPECTR MAGAZINE

florian uerschels

CLIENTS

THE YEAR BOOK FANZINE
TUSH MAGAZINE
VULCAN MAGAZINE
VULKAN MAGAZINE

PHOTOGRAPHERS

ARMIN MORBACH
ARNA STEINARSDOTTIR
ARNO ENDE
ESTELLE KLAWITTER
FEDERICO LECCE
GINA TILGERT
IGNAZIO LOZANO
JULIAN SCHIEVELKAMP
KATHRIN MAKOWSKI
KEVIN RASHID GIAQUINTO
KLCKIN
KRISZTIAN MATHE
MAURIZIO ANNESE
MICHAEL MUNIQUE
OLIVER BECKMANN
PAWEL FABJANSKI
PHILIPP ALTHEIMER
VALERII PAKHOMOV

SHOWS

RESHAKE
FW 20, MILAN

tune models

+ 49 171 990 94 32

mail@tune-models.com

tune-models.com

#tunefamily



SHOWS

WHITE MOUNTAINEERING

FW 20, PARIS

WHO DECIDES WAR

FW 20, PARIS

ERMENEGILDO ZEGNA

FW20, 1STSHOW, MILAN

MOTHER AGENCY

TUNE MODEL MGMT

AGENCY'S WORLDWIDE

INDEPENDENT, MILAN

88 MODEL MANAGEMENT, PARIS

SUN ESEE, HONG KONG

ACTIVE, GUANGZHOU

JS AGENCY.KR, SEOUL

DAMAN, ISTANBUL

WILD, LONDON

LE MANAGEMENT, STOCKHOLM

LE MANAGEMENT, COPENHAGEN

florian uerschels

tune models

+ 49 171 990 94 32

mail@tune-models.com

tune-models.com

#tunefamily