

height	178	bust	82	dress	36/38
hair	red	waist	65	bra	b75
eyes	blue	hips	95	shoes	38,5



zoe herveva



tune models

+ 49 171 990 94 32

mail@tune-models.com

tune-models.com

#tunefamily



zoe herveva



tune models

mail@tune-models.com

+ 49 171 990 94 32

tune-models.com

#tunefamily



zoe herveva



tune models

+ 49 171 990 94 32

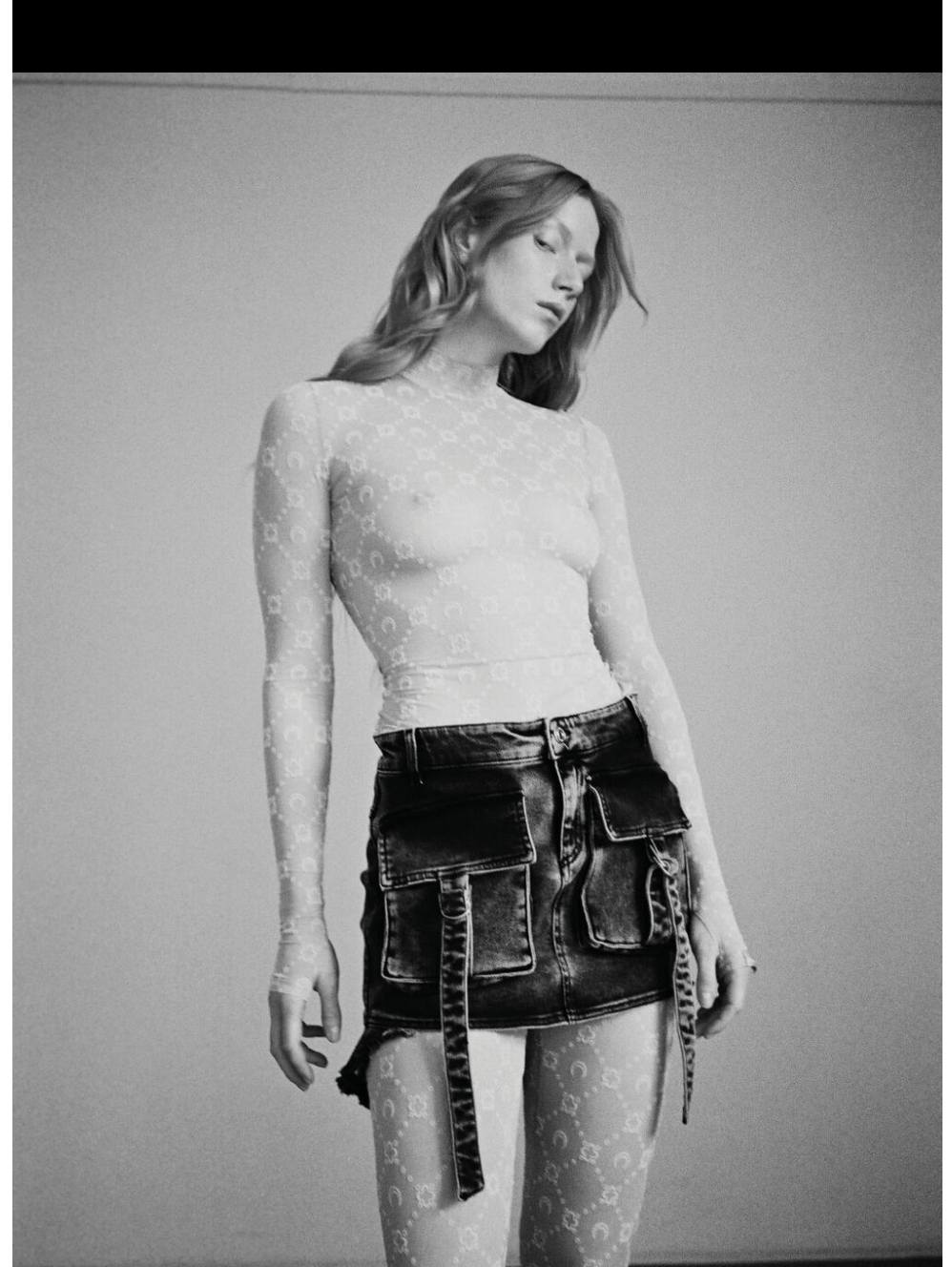
mail@tune-models.com

tune-models.com

#tunefamily



zoe herveva



tune models

mail@tune-models.com

tune-models.com

+ 49 171 990 94 32

#tunefamily



zoe herveva



tune models

mail@tune-models.com

+ 49 171 990 94 32

tune-models.com

#tunefamily

Zoe gestylt von Sophie Földiák.
Body und Rock von UY STUDIO.
Schuhe von JIMMY CHOO.
Ring von SWAROVSKI.



zoe herveva



tune models

mail@tune-models.com

tune-models.com

+ 49 171 990 94 32

#tunefamily



Zoe gestylt von
Maryna Sinsarenko.
Jacke und Hosenrock von
MARINA HOERMANSIEDER.
Kleid von JOSEPH.
Schuhe von TRIPPEX.

zoe herveva



tune models

mail@tune-models.com

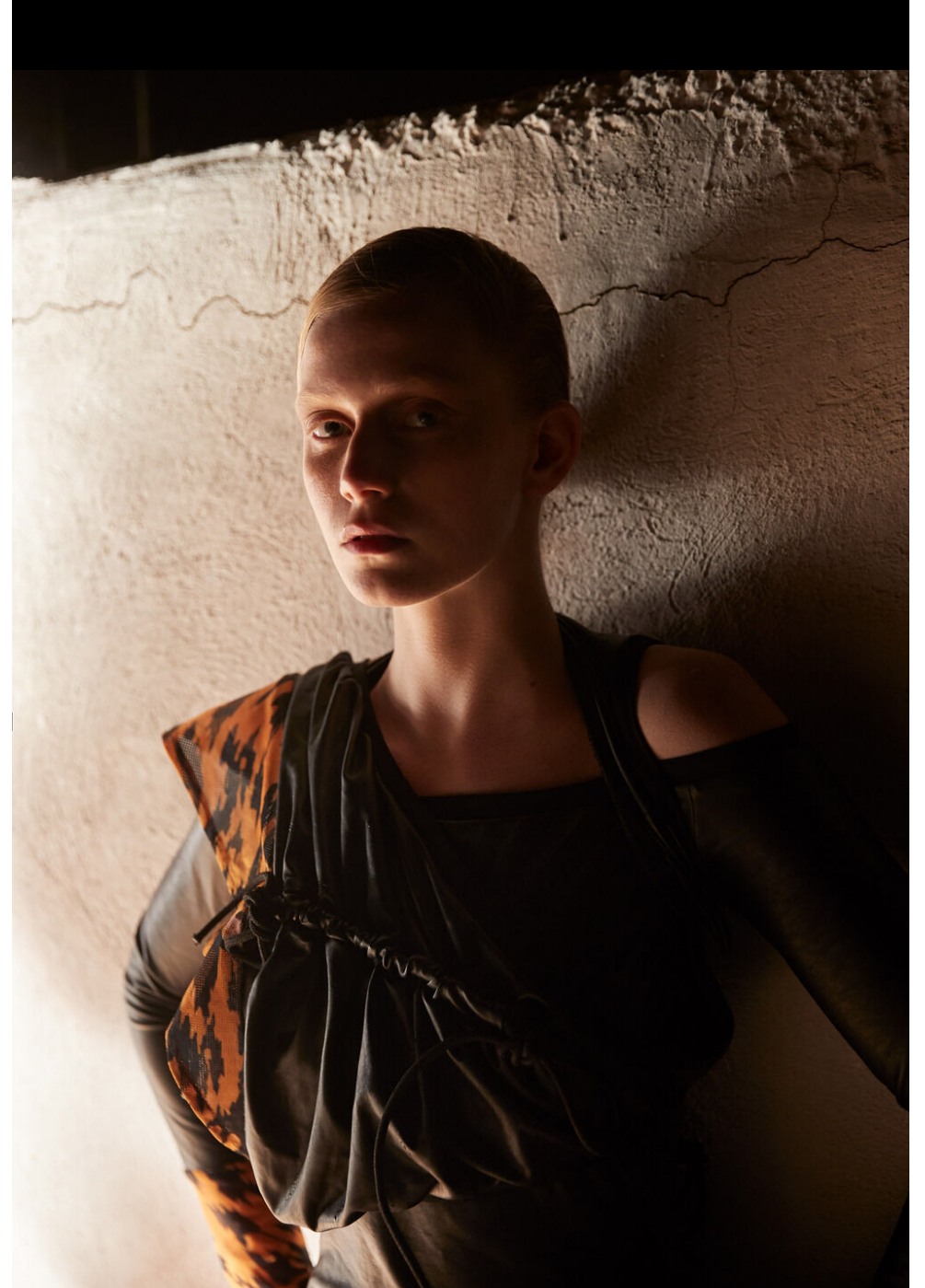
tune-models.com

+ 49 171 990 94 32

#tunefamily



zoe herveva



tune models

mail@tune-models.com

tune-models.com

+ 49 171 990 94 32

#tunefamily



zoe herveva



tune models

mail@tune-models.com

tune-models.com

+ 49 171 990 94 32

#tunefamily



zoe herveva



tune models

mail@tune-models.com

tune-models.com

+ 49 171 990 94 32

#tunefamily



Zoe gestylt von Marco Coel.
Mantel und Schuhe von FERRAGAMO.
Rock von UY STUDIO. Kette
von SWAROVSKI.

zoe herveva



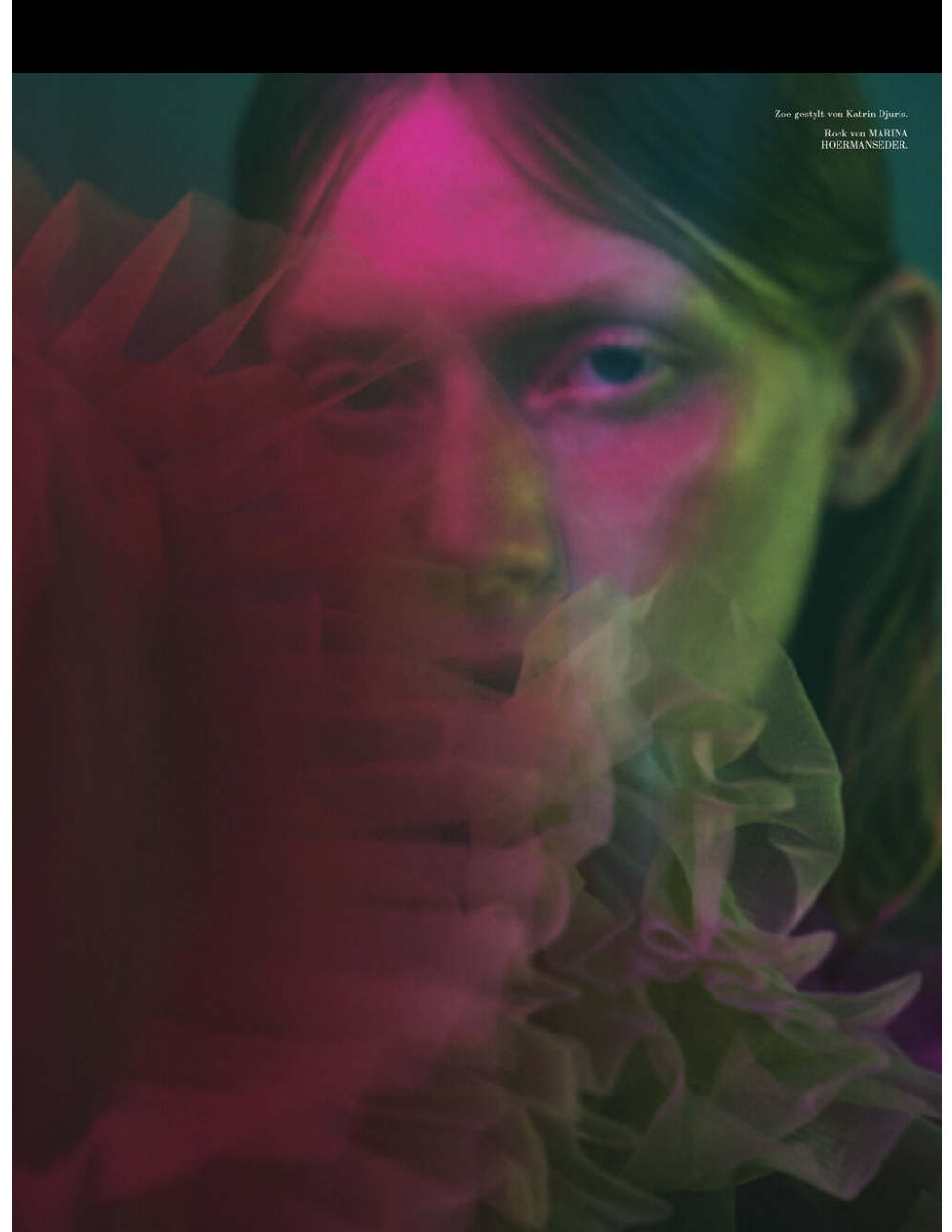
tune models

mail@tune-models.com

tune-models.com

+ 49 171 990 94 32

#tunefamily



Zoe gestylt von Katrin Djuris.
Rock von MARINA
HOERMANSEDER.

zoe herveva

tune models

mail@tune-models.com

+ 49 171 990 94 32

tune-models.com

#tunefamily



zoe herveva

tune models

mail@tune-models.com

+ 49 171 990 94 32

tune-models.com

#tunefamily



zoe herveva



tune models

+ 49 171 990 94 32

mail@tune-models.com

tune-models.com

#tunefamily



zoe herveva



tune models

mail@tune-models.com

+ 49 171 990 94 32

tune-models.com

#tunefamily



zoe herveva



tune models

mail@tune-models.com

tune-models.com

+ 49 171 990 94 32

#tunefamily



zoe herveva



tune models

+ 49 171 990 94 32

mail@tune-models.com

tune-models.com

#tunefamily



zoe herveva



tune models

+ 49 171 990 94 32

mail@tune-models.com

tune-models.com

#tunefamily



zoe herveva



tune models

+ 49 171 990 94 32

mail@tune-models.com

tune-models.com

#tunefamily



zoe herveva



tune models

mail@tune-models.com

tune-models.com

+ 49 171 990 94 32

#tunefamily



zoe herveva



tune models

+ 49 171 990 94 32

mail@tune-models.com

tune-models.com

#tunefamily



zoe herveva



tune models

mail@tune-models.com

tune-models.com

+ 49 171 990 94 32

#tunefamily



zoe herveva



tune models

mail@tune-models.com

+ 49 171 990 94 32

tune-models.com

#tunefamily



zoe herveva



tune models

mail@tune-models.com

+ 49 171 990 94 32

tune-models.com

#tunefamily



zoe herveva



tune models

mail@tune-models.com

tune-models.com

+ 49 171 990 94 32

#tunefamily

TM
TUNE MODELS



zoe herveva

tune models

mail@tune-models.com

+ 49 171 990 94 32

tune-models.com

#tunefamily



zoe herveva



tune models

+ 49 171 990 94 32

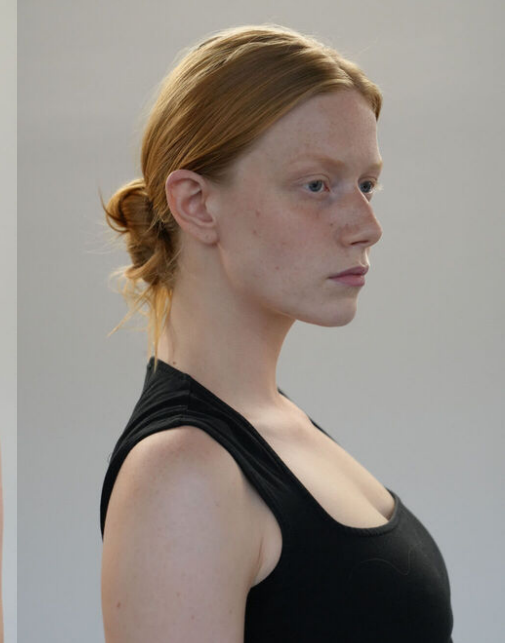
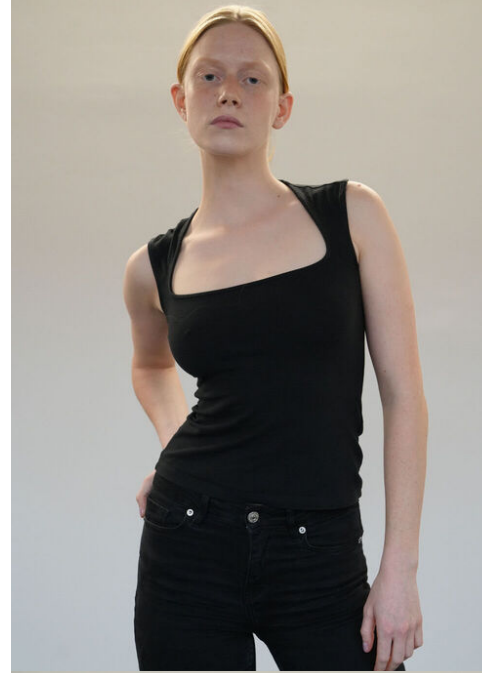
mail@tune-models.com

tune-models.com

#tunefamily



zoe herveva





zoe herveva



tune models

mail@tune-models.com

tune-models.com

+ 49 171 990 94 32

#tunefamily



zoe herveva



tune models

mail@tune-models.com

tune-models.com

+ 49 171 990 94 32

#tunefamily



zoe herveva



tune models

mail@tune-models.com

tune-models.com

+ 49 171 990 94 32

#tunefamily



zoe herveva



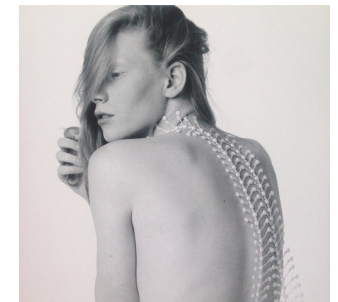
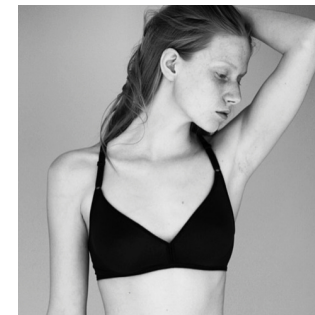
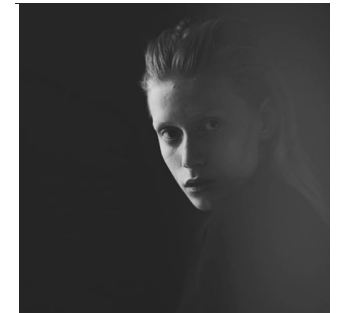
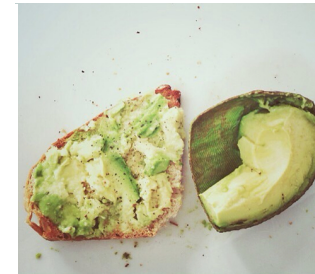
tune models

mail@tune-models.com

tune-models.com

+ 49 171 990 94 32

#tunefamily



zoe herveva

tune models

+ 49 171 990 94 32

mail@tune-models.com

tune-models.com

#tunefamily



FACTS & EXPERIENCE

NATIONALITY	GERMAN
ORIGIN	GERMAN
LANGUAGES	GERMAN, ENGLISH, FRENCH
DRIVERS LICENSE	B
PRONOUN	SHE/HER
NUTRITION	VEGETARIAN, NO WALNUTS
TALENTS	ACTING, DANCING, DRAWING, KNIT, SEW
SPORTS	FITNESS, YOGA, CLIMBING
AGE	26y.
ORIGIN	GERMAN
CLIENTS	ANCIENT ANTONIA ZANDER ARNOLDY & TRAUB ASYM MAGAZINE

CLIENTS

CELIA KRITHARIOTI
 CHILL OUT
 COSTARELLOS
 DANNY REINKE
 FACES MAGAZINE
 FRANKFURTER ALLGEMEINE
 QUARTERLY
 JOLIE MAGAZINE
 LE MILE MAGAZINE
 LIEBESKIND
 MAECKES / UNIVERSAL
 NIDODILEDA
 OK MAGAZINE
 PARK THE HOUSE
 PUGNAT
 RICHERT BEIL
 SCHLOSSPARK BENRATH

SICKY MAG
 SOGNARE

PHOTOGRAPHERS

KOSTAS AVGOULIS
 ALBAN E. SMAJLI
 ANDREA GRAMBOW & JOSCHA
 KIRCHKNOPF
 ANDREW WALLET

zoe herveva

tune models

+ 49 171 990 94 32

mail@tune-models.com

tune-models.com

#tunefamily



PHOTOGRAPHERS

AVA PIVOT
AVGOULIS KOSTAS
AXL JANSEN
CLAUDIA GRASSL
DIMITRIS SKOULOS
JEFF OLSON
KOSTAS AVGOULIS

MICHAEL ENGLERT
MONICA MENEZ
NIKOS LIAKOS
OLIVER BECKMANN
PANOS DAVIOS
PER FLORIAN APPELGREN
PETER OLIVER WOLF
SANDRA SEMBURG
SKOULOS DIMITRIS
STUDIO KIRCHKNOPF & GRAMBOW
PHOTOGRAPHY
SUZANA HOLTGRAVE
TIMO KERBER
TOBIAS WIRTH

PHOTOGRAPHERS

ULRICH HARTMANN
YANNIS BOURNIAS
YIORGOS KAPLANDIS
ZUUMEO

MOTHER AGENCY

TUNE MODEL MGMT

STAY TUNED.

zoe herveva

tune models

+ 49 171 990 94 32

mail@tune-models.com

tune-models.com

#tunefamily